



The  
**FTFS**<sup>TM</sup>  
Series

Field-adjustable lumen & color  
Center Basket LED Troffer





field-adjustable lumen & color  
Center Basket  
LED Troffer



PROJECT: \_\_\_\_\_

DATE: \_\_\_\_\_

TYPE: \_\_\_\_\_

PREPARED BY: \_\_\_\_\_



#### KEY FEATURES

- 100,000-Hour LED lifespan
- Field-adjustable CCT & Wattage standard on all models
- Optional surface or recessed mount kits available
- Optional motion controls available
- Battery backup option available

## TECHNICAL SPECIFICATIONS

### COMPLIANCE

#### UL Listed

UL 1598 Suitable for damp locations, Type IC

#### IESNA LM79 & LM-80 Testing

PacLights LED luminaires have been tested by an independent laboratory in accordance with IESNA LM-79 and LM-80.

#### DLC Qualification

Selected models of this product are on the Design Lights Consortium (DLC) Qualified Products List and are eligible for rebates from DLC Member Utilities. To view our DLC qualified products, please consult the DLC Qualified Products List at [www.design-lights.org/qpl](http://www.design-lights.org/qpl)

### LED CHARACTERISTICS

#### LEDs

Long-life, high-efficacy, surface-mount LEDs

#### Lifespan

100,000-hour LED lifespan based on IES LM-80 results and TM-21 calculations

#### Color Rendering Index

>80

#### Color Uniformity

PacLights' range of Correlated Color Temperature follows the guidelines of the American National Standard for Specifications for the Chromaticity of Solid State Lighting (SSL) Products, ANSI C78.377-2017

### ELECTRICAL

#### Drivers

0-10V continuous dimming, can be dim to 10%

Input Voltage: 120-277V, 50-60 Hz

Power Factor: > 0.9

Input Current: FTFS/2-22D: 0.28A (120v); 0.17A (208v); 0.14A (240v); 0.13A (277v).  
FTFS/2-24D: 0.42A (120v); 0.24A (208v); 0.21A (240v); 0.19A (277v).  
FTFS/2-14D: 0.28A (120v); 0.17A (208v); 0.14A (240v); 0.13A (277v).

### CONSTRUCTION

#### Ambient Temperature

Suitable for 50° C (122° F) ambient temperature

#### Cold Weather Starting

The minimum starting temperature is -4 F°/-20° C

#### Housing

Durable cold rolled steel housing provides strength and uniformity. Luminaire is pre-painted to enhanced smooth finish.

#### IC Rated

Suitable for direct contact with insulation

#### Mounting Methods

- T-grid lay-in (standard)
- Surface mount (optional)
- Drywall recessed flange (optional)

#### Green Technology

Mercury and UV free, and RoHS compliant. Polyester powder coat finish formulated without the use of VOC or toxic heavy metals.

#### Lens

Frosted

### OTHER

#### 5-Year Limited Warranty\*\*

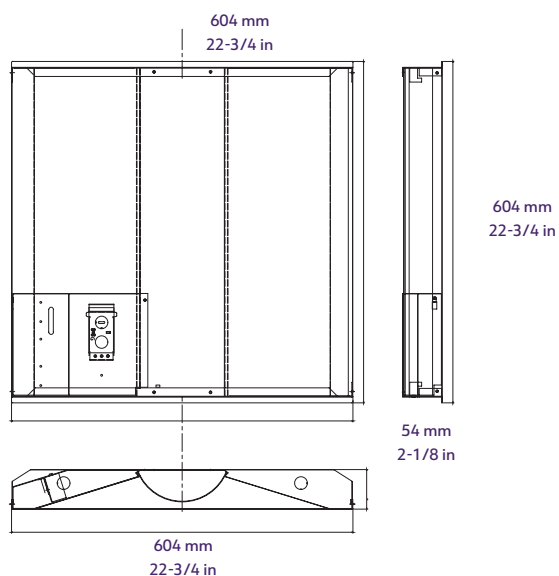
The PacLights 5-year, limited warranty covers light output, driver performance and paint finish.

\*\*PacLights's warranty is subject to all terms and conditions found at [paclights.com/warranty](http://paclights.com/warranty)

## TECHNICAL SPECIFICATIONS Continued

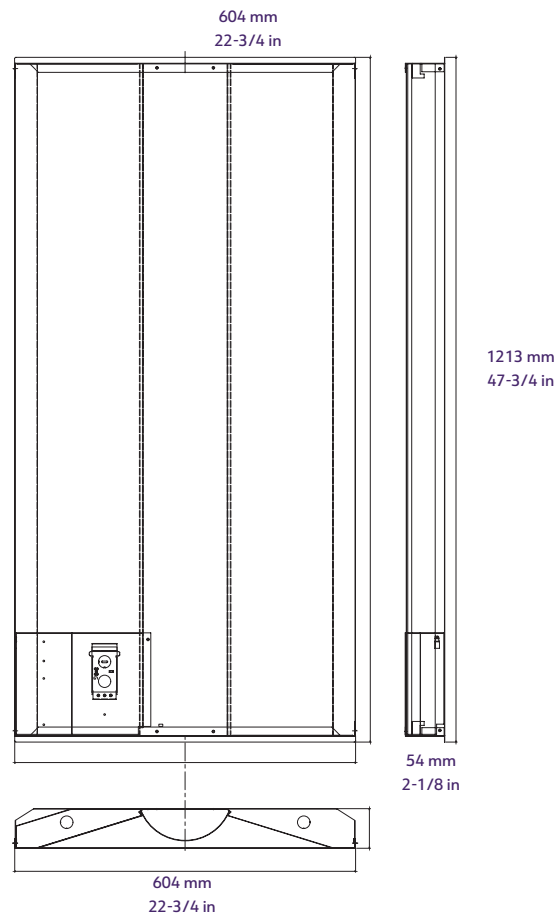
### FTFS/2 - 22D (2x2 Ft)

Weight 7.7 lbs



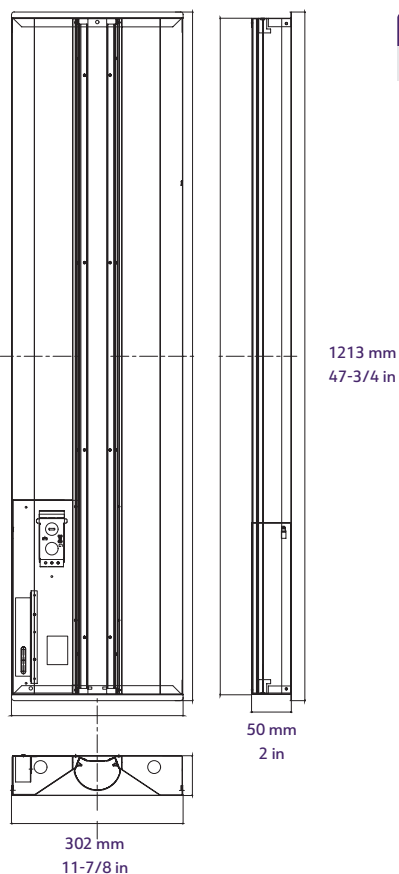
### FTFS/2 - 24D (2x4 Ft)

Weight 12.8 lbs



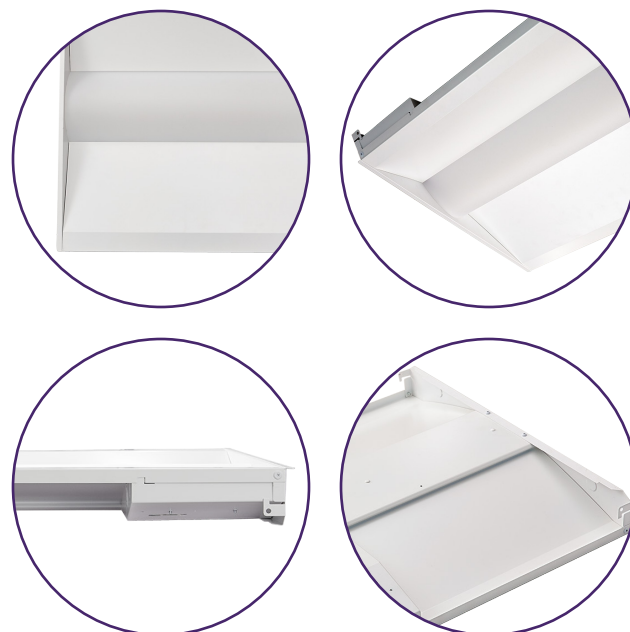
### FTFS/2 - 14D (1x4 Ft)

Weight 9.9 lbs



#### FINISHES

all models White



## FIELD ADJUSTABLE Standard

## CONTROL Optional

### TOOL-LESS FIELD ADJUSTABLE CCT & WATTAGE



Select the desired output power or light color temperature by sliding the respective Output Power or CCT Selection Switch left or right to the desired value. CCT can be adjusted to 3500/4000/5000K, and Output Power can be adjusted to:

- 30w / 25w / 20w for 2x2 and 1x4 models
- 45w / 38w / 34w for 2x4 models

## EMERGENCY BACKUP Optional

### EMERGENCY BACKUP (-EM)



FTFS series emergency backup models works out of the box to save time and cost in the installation. When there is a power outage, the emergency backup driver and battery will power the FTFS to an brightness of 1,000 lumen for at least 90 mins.



MOTION CONTROL OPTION

Microwave occupancy control detect motions even through plastic, glass and thin non-metal materials. It contains a signature 3-step dimming function, which is perfect for areas that require a light change notice totally switching off the light. Control parameters are adjustable on the sensor, or by an optional wireless commissioning device.



occupancy control wireless commissioning device (optional)

## PERFORMANCE

### FTFS/2 - 22D (2x2 Ft)

Light color temperature field-adjustable to 3500K/4000K/5000K, Output wattage field-adjustable to 30w/25w/20w

30W	3500K Warm	4000K Neutral	5000K Daylight
LUMENS	3,780	3,810	3,840
LM/W	126	127	128

25W	3500K Warm	4000K Neutral	5000K Daylight
LUMENS	3,250	3,275	3,300
LM/W	130	131	132

20W	3500K Warm	4000K Neutral	5000K Daylight
LUMENS	2,660	2,680	2,700
LM/W	133	134	135

### FTFS/2 - 24D (2x4 Ft)

Light color temperature field-adjustable to 3500K/4000K/5000K, Output wattage field-adjustable to 45w/38w/34w

45W	3500K Warm	4000K Neutral	5000K Daylight
LUMENS	5,805	5,850	5,895
LM/W	129	130	131

38W	3500K Warm	4000K Neutral	5000K Daylight
LUMENS	5,016	5,054	5,092
LM/W	132	133	134

34W	3500K Warm	4000K Neutral	5000K Daylight
LUMENS	4,590	4,624	4,658
LM/W	135	136	137

### FTFS/2 - 14D (1x4 Ft)

Light color temperature field-adjustable to 3500K/4000K/5000K, Output wattage field-adjustable to 30w/25w/20w

30W	3500K Warm	4000K Neutral	5000K Daylight
LUMENS	3,870	3,900	3,930
LM/W	129	130	131

25W	3500K Warm	4000K Neutral	5000K Daylight
LUMENS	3,375	3,400	3,425
LM/W	135	136	137

20W	3500K Warm	4000K Neutral	5000K Daylight
LUMENS	2,760	2,780	2,800
LM/W	138	139	140

## ORDERING INFORMATION

### FTFS™ generation 2

Family	Model	Optional Function	Optional Addons
FTFS/2	<div>22D 2ft x 2ft, 30w/25w/20w power &amp; 3500k/4000k/5000k CCT Adjustable</div> <div>24D 2ft x 4ft, 45w/38w/34w power &amp; 3500k/4000k/5000k CCT Adjustable</div> <div>14D 1ft x 4ft, 30w/25w/20w power &amp; 3500k/4000k/5000k CCT Adjustable</div>	<div>MC<sup>1</sup> Bi-level occupancy control</div> <div>EM Emergency battery backup</div>	<div>SM Surface mount</div> <div>DG Drywall flange</div>

note: 1) available on 2x2 (22D) or 2x4 (24D) models