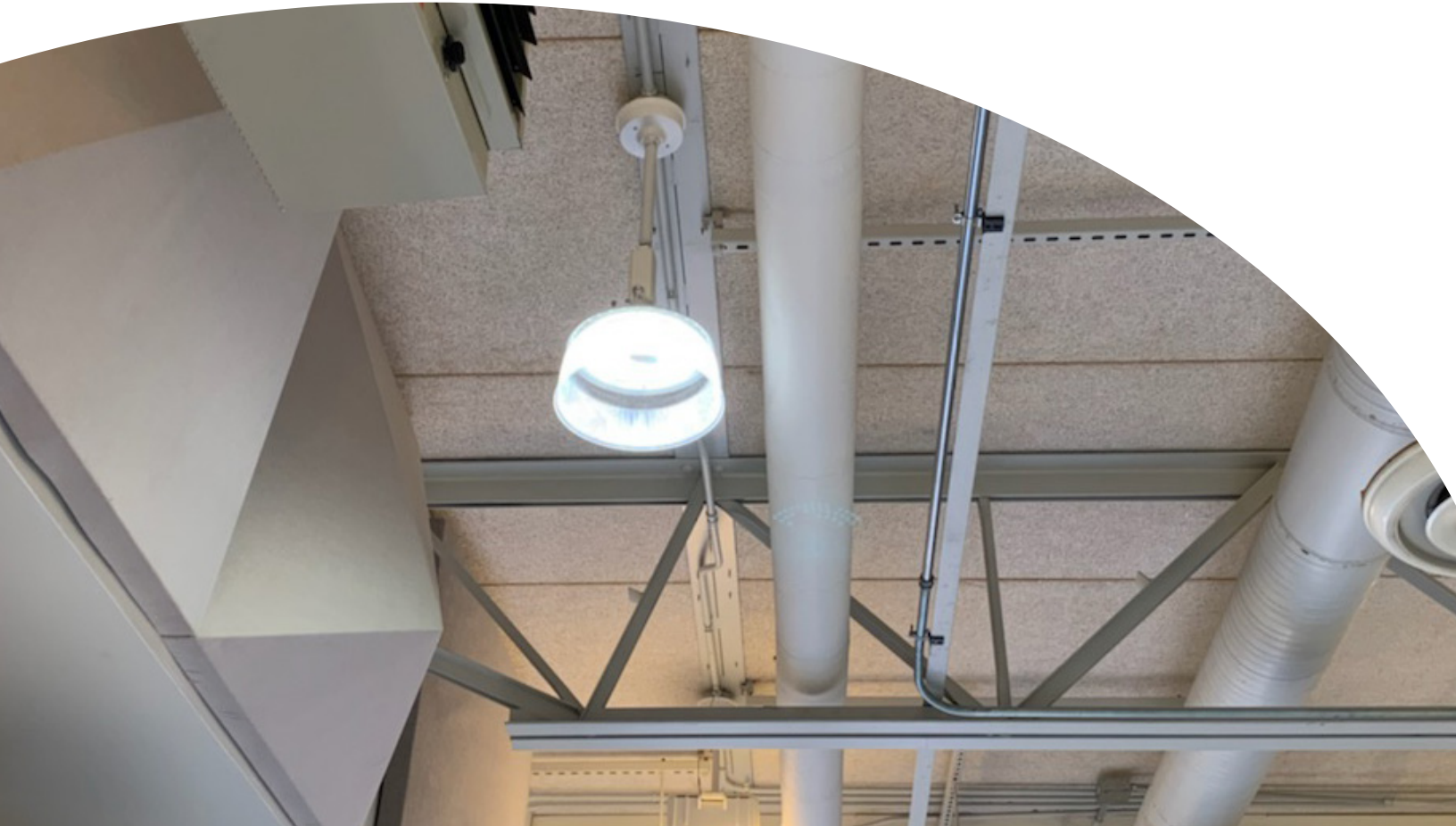




The
FHUS[™]
Series

Wattage and Color Selectable
LED High Bay Light





Wattage and color selectable
LED High Bay Light

PROJECT: _____

DATE: _____

TYPE: _____

PREPARED BY: _____



KEY FEATURES
Wattage and color selectable standard on all models
Optional twist-on Bi-level motion and daylight control
Emergency battery backup available
Multiple Mounting options
Networked lighting control option



TECHNICAL SPECIFICATIONS

COMPLIANCE

UL Listed

UL 1598 Suitable for wet locations

NSF Certified

Conform to the requirements of NSF/ANSI 2 - Food Equipment

IESNA LM79 & LM-80 Testing

Paclights LED luminaires have been tested by an independent laboratory in accordance with IESNA LM-79 and LM-80.

DLC Qualification

Selected models of this product are on the Design Lights Consortium (DLC) Qualified Products List and are eligible for rebates from DLC Member Utilities. To view our DLC qualified products, please consult the DLC Qualified Products List at www.design-lights.org/qpl

LED CHARACTERISTICS

LEDs

Long-life, high-efficacy, surface-mount LEDs

Correlated Color Temperature (CCT)

CCT can be adjusted by dip-switch to 3500K/4000K/5000K

Lifespan

100,000-hour LED lifespan based on IES LM-80 results and TM-21 calculations

Color Rendering Index

>80

Color Uniformity

PacLights' range of Correlated Color Temperature follows the guidelines of the American National Standard for Specifications for the Chromaticity of Solid State Lighting (SSL) Products, ANSI C78.377-2017

OTHER

5-Year Limited Warranty**

The PacLights 5-year, limited warranty covers light output, driver performance and paint finish.

**PacLights's warranty is subject to all terms and conditions found at paclights.com/warranty

CONSTRUCTION

IP Rating

Ingress Protection rating of IP65 for dust and water

Ambient Temperature

Suitable for 50° C (122° F) ambient temperature

Cold Weather Starting

The minimum starting temperature is -40 F°/-40° C

Housing

Die-cast aluminum housing; stainless steel external hardware; silicone gasket.

Mounting Methods

- Hook mount (standard)
- 3/4" NPT threaded conduit mount (optional)
- 3/4" or 1/2" NPT threaded pendant mount (optional)
- Ceiling/wall surface mount (optional)

Green Technology

Mercury and UV free, and RoHS compliant.

Lens

Polycarbonate, 90° UGR< 28.

Optional prismatic acrylic or aluminum reflector

ELECTRICAL

Driver

0-10V continuous dimming, can be dim to off

Input Voltage: 120-277V, or 277-480v (HV models), 50-60 Hz

Power Factor : > 0.9; THD: <20%

Surge protection: L/N-PE: 6kV, L-N: 6kV

Cord: 6ft AC power cord (3-wire), 6ft dimming control cord (2-wire)

Wattage can be adjusted by dip-switch, to:

- 90w / 120w / 150w on FHUS/3-150 models
- 180w / 200w / 240w on FHUS/3-240 models

Input Current:

FHUS/3-150: 1.4A (120v); 0.7A (240v); 0.65A (277v); 0.35A (480v).

FHUS/3-240: 2.3A (120v); 1.2A (240v); 1A (277v); 0.55A (480v).

FEATURES

Tool-less In-field Selectable Wattage/CCT



Select the desired output power/lumen or light color temperature by sliding the respective Wattage or CCT Selection Switch left or right to the desired value. CCT can be adjusted to 3500/4000/5000K, and Wattage can be adjusted to:

- 90w / 120w / 150w on FHUS/3-150 models
- 180w / 200w / 240w on FHUS/3-240 models

Output power/lumen and color can be changed before, during and after installation.

Controls Ready



FHUS comes integrated with a sensor port for easy in-field plug and play sensor installation. Control options include:

- Microwave bi-level motion & daylight(threshold)
- PIR bi-level motion & daylight(threshold)
- Microwave bi-level motion & daylight harvesting*
- Networked Lighting Controls (NLC)*

* adapter required for daylight harvesting or NLC options.

CONTROL Options

Microwave Bi-level Motion Control (option: -MCW)



Microwave occupancy control detect motions even through plastic, glass and thin non-metal materials. It can be mounted as high as 40 ft high and contains a signature 3-step dimming function, which is perfect for areas that require a light change notice totally switching off the light. Optional daylight(threshold) function will turn off fixture on pre-set level of ambient light. Control parameters are adjustable by an optional wireless commissioning device.

Passive Infrared Bi-level Motion Control (option: -MCP)



A PIR sensor can detect changes in the amount of infrared radiation impinging upon it, which varies depending on the temperature and surface characteristics of the objects in front of the sensor. It can be mounted as high as 40 ft high and contains a signature 3-step dimming function, which is perfect for areas that require a light change notice totally switching off the light. Optional daylight(threshold) function will turn off fixture on pre-set level of ambient light. Control parameters are adjustable by an optional wireless commissioning device.

-MCW / -MCP Sensor Control Specification *default setting

Manual Trim/Dim	0%-100%; Quick Preset 70%/80%/90%/100%*
Sensitivity	20%/50%/75%/100%*
Hold Time (before dim)	10s/1min*/10min/30min
Daylight Threshold	10/30/50/100 Lux, or Disable*
Stand-by Time(before turn off)	1min*/30min/60min, or Never
Stand-by Dimming Level	10%/20%*/30%/50%
Detection Height	up to 40ft
Detection Radius	up to 40ft (-MCW) or up to 15ft (-MCP)

Optional wireless commissioning device can be purchase separately to customize settings of options: -MCW/-MCP controls.



Bi-level Motion and Daylight Harvesting Control (option: -MCD)



In addition to all the functions provided by a microwave bi-level occupancy control, daylight harvesting control also use daylight to offset the amount of electric lighting needed to properly light a space. Optional wireless commissioning device can be purchase separately to customize settings.

-MCD Sensor Control Specification *default setting

Sensitivity	20%/50%/75%/100%*
Hold Time (before dim)	10s/1min/5min*/10min/15min/20min/30min/60min
Daylight Threshold	10/30/50/100/300/500 Lux, or Disable*
Stand-by Time(before turn off)	1min/30min/60min*, or Never
Stand-by Dimming Level	10%/30%*/50%
Detection Height	up to 40ft
Detection Radius	up to 50ft

Networked Lighting Controls (option: -WBP/-WBM/-WBN)



Network Lighting Controls (NLC) offer Luminaire Level Lighting Control (LLLC) based on Bluetooth-enabled Mesh Networking of Luminaires. Individual addressability enables luminaires to be communicated with each other within the zone/network. Luminaires can be grouped, trim and controlled by using the smart device app or connected wall switches. Scheduling, scene and sensors can be added for automation among the lights within the zone/group.

- **(-WBP)** Wireless bluetooth networked control with PIR occupancy and daylight harvesting sensor
- **(-WBM)** Wireless bluetooth networked control with microwave occupancy and photocell sensor
- **(-WBN)** Wireless bluetooth networked control (node only)



iOS/Andriod APP will be used to commissioning or customize settings of options: -WBP/-WBM/-WBN networked controls.

REFLECTOR Options

90° Aluminum Reflector (-ALRF)



Aluminum reflectors create focused, direct light distribution. They are designed to direct light downward with minimal scattering, resulting in a more concentrated beam. This makes them well-suited for tasks that require precision or for illuminating specific areas.

90° Prismatic Reflector (-PCRF)



Prismatic reflectors offer a more diffused light distribution. The prisms on the surface of the reflector refract the light, spreading it more evenly across a larger area. This results in fewer shadows and more uniform illumination, making prismatic reflectors ideal for general lighting purposes in large spaces.

90° Prismatic Reflector with Drop lens (-PCRD)



Bottom cover lens improves the appearance of the high bay lighting fixture by concealing the light source, providing a cleaner, more streamlined look.

It can also help to further diffuse the light, providing a more even distribution across the illuminated area. This is particularly useful in spaces where a softer, more uniform light is desirable, such as commercial or retail environments.

The combination of the prismatic reflector and the cover lens can minimize glare, reduce shadows, and create a more visually comfortable environment. This can be particularly beneficial in spaces where aesthetics are important, such as retail stores or exhibition spaces.

EMERGENCY BACKUP Option

Emergency Battery Backup (-EM)



FHUS series emergency backup models save time and cost in the installation. When there is a power outage, the emergency backup driver and battery will power the FHUS to a brightness of 6,000 lumen (sku: EMU-40) or 9,000 lumen (sku: EMU-60) for at least 90 mins.

MOUNTING Options

Surface Mount (-UM)



Surface mount installations can be adapted to various types of ceiling structures, such as flat or sloped surfaces, making them a flexible option for different environments. It also allows for adjusting the angle of the high bay fixture, enabling you to direct the light towards specific areas or objects, thus optimizing the light distribution in the space.

Conduit/Stem Mount (-CM)



Stem mount, also known as conduit mount, involves attaching the high bay fixture to a NPT 3/4" conduit or pipe. This method provides a secure installation, often used in industrial or warehouse settings.

Pendant Mount (-PM)



The pendant mount kit enables the attachment of high bay fixtures to a 3/4" or 1/2" NPT conduit or pipe while also offering a junction box for convenient connections to the fixture's power supply or dimming control cables. Additionally, this kit ensures a sleek and tidy appearance.

WIREGUARD Options

Wireguard (-WG)



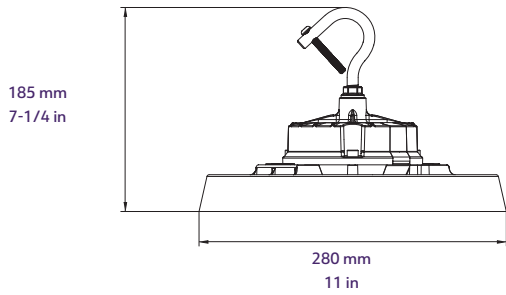
Optional wireguards can be attached to FHUS High Bays to provide extra protection from physical damage.

DIMENSIONS

FHUS/3 - 150

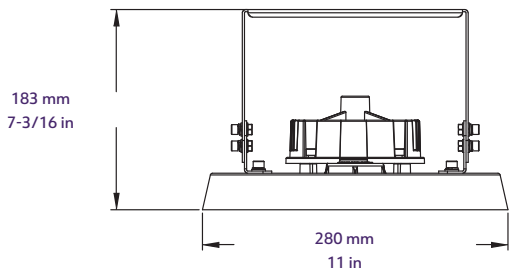
Weight 5.1 lbs

standard hook



Weight 6.2 lbs

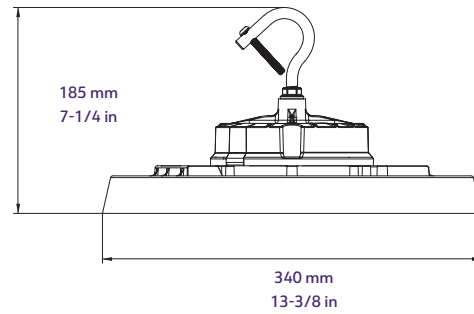
optional surface mount



FHUS/3 - 240

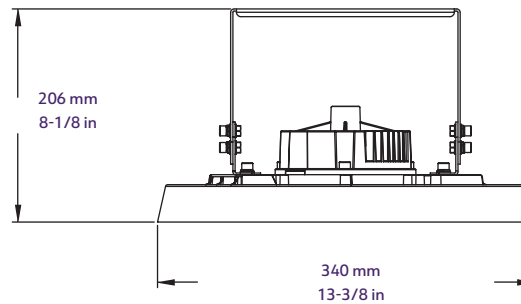
Weight 7.1 lbs

standard hook



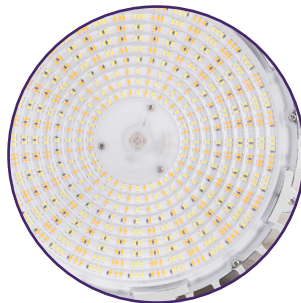
Weight 8.4 lbs

optional surface mount



FINISHES

all models White



PERFORMANCE

	Models	Lumen Packages	Wattage Selected	CCT Setting	Lumen Output	LPW
Delivered Lumens, 80 CRI	FHUS/3-150	12,000	90w	3500K	12,150	135
				4000K	13,500	150
				5000K	12,600	140
		17,000	120w	3500K	16,200	135
				4000K	18,000	150
				5000K	16,800	140
		21,000	150w	3500K	20,250	135
				4000K	22,500	150
				5000K	21,000	140
	FHUS/3-240	25,000	180w	3500K	24,300	135
				4000K	27,000	150
				5000K	25,200	140
		28,000	200w	3500K	27,000	135
				4000K	30,000	150
				5000K	28,000	140
33,000	240w	3500K	32,400	135		
		4000K	36,000	150		
		5000K	33,600	140		



ORDERING INFORMATION

FHUS™ generation 3

Family	Model	Input Voltage	Optics	Mount	Option
FHUS/3					
	150 150w/120w/90w wattage selectable; 3500/4000/5000K color selectable.	UV 120-277v HV 277-480v	[blank] 90° optic ALRF 90° aluminum reflector PCRF 90° prismatic reflector PCRD 90° prismatic reflector with drop lens	[blank] hook mount CM 3/4" NPT con- duit/stem mount PM 3/4" or 1/2" NPT pendant mount UM surface mount	[blank] None EM Emergency battery backup WG Wireguard MCW Microwave bi-level motion sensor control MCP PIR bi-level motion sensor control MCD Microwave bi-level motion + daylight harvest- ing sensor control WBP Wireless bluetooth networked control w/ PIR motion and daylight sensor (NLC) WBM Wireless bluetooth networked control w/ Mi- crowave motion and daylight sensor (NLC) WBN Wireless bluetooth networked control (NLC)

NETWORKED CONTROLS MADE EASY

Keilton Networked Controls, a DLC® Qualified Networked Lighting Controls Product, make it easy for facilities to save energy, improve occupancy comfort and achieve code compliance by adding Luminaire Level Lighting Controls (LLLC) to indoor and outdoor applications. It allows for easy field installation of sensors and network nodes with selected PacLights controls ready fixtures. Using the Keilton app, nodes can be commissioned without the need for a gateway or internet access.



A Cost-Effective Decentralized Architecture
Direct Mobile Device Provisioning
Best-In-Class Scale, Performance & Reliability



LEARN MORE, VISIT
www.paclights.com/NLC



FEATURES

- Luminaire Level Lighting Control (LLLC)
- Bluetooth-enabled Mesh Networking of Luminaires and Devices
- Individual Addressability, address individual or multiple luminaires
- High-end and Low-end Trim
- Zoning & Grouping
 - ◊ Add and control up to 100 devices per zone
 - ◊ Add unlimited zones to scale for bigger installation
 - ◊ Create unlimited groups (combination of sensor or network nodes) within a zone
 - ◊ Link and control the whole group or zone
- Scene control
 - ◊ Create and link scenes to individual lights or groups within a zone
 - ◊ Select scene with App or wall switch
- Time Scheduling for individual lights, groups or scenes
- Sensors integrated with BLE, occupancy and daylight sensing
- Multi-level Dimming, Daylight Harvesting and Occupancy controls
- Manual/Automatic ON/OFF and Automatic partial ON/OFF control capability
- Control with wireless wall switch or smart device
- Secure commissioning with Keilton App
- Up to 100 ft node-to-node and 50 ft node-to-device
- Demand Response option (works with OpenADR gateways)
- Controlled 120v 20A Receptacle available
- Other control features to meet code compliance




Keilton and its logo is a trademark of Litetrace; **PacLights** and its logo is a trademark of PacLights, LLC
 DLC and its logo is a trademark of DesignLights Consortium.
 Keilton is the qualified system name listed on the DLC Networked Lighting Controls QPL.





NETWORKED CONTROLS for FHUS series



NETWORKED NODES ONLY

SKU	DESCRIPTION	FUNCTION	CONTROL ORDER CODE
KEILTON-WPPA102-AUX	 KEILTON WPPA102-AUX DC AUX BLUETOOTH MESH NODE	Enable network controlled - on & off, dim, trim, zone, group, scene & schedule, etc.	-WBN

NETWORKED NODES WITH SENSOR

SKU	DESCRIPTION	FUNCTION	CONTROL ORDER CODE
KEILTON-EFS106-AUX	 KEILTON EFS106-AUX DC AUX BLUETOOTH MESH NODE W/ PIR DLH SENSOR	Enable network controlled - on & off, dim, trim, zone, group, scene & schedule, etc. And, PIR occupancy & daylight (harvesting) sensing.	-WBP
KEILTON-EFS116-AUX	 KEILTON EFS116-AUX DC AUX BLUETOOTH MESH NODE W/ MICROWAVE PHOTOCCELL SENSOR	Enable network controlled - on & off, dim, trim, zone, group, scene & schedule, etc. And, Microwave occupancy & photo sensing	-WBM

Keilton and its logo is a trademark of Litetrace; PacLights and its logo is a trademark of PacLights, LLC
DLC and its logo is a trademark of DesignLights Consortium.
Keilton is the qualified system name listed on the DLC Networked Lighting Controls QPL.