

The
FHMATM
Series

High Performance
LED High Mast Light





high performance
LED High Mast Light



PROJECT:

DATE:

TYPE:

PREPARED BY:



KEY FEATURES

100,000-Hour LED lifespan

0-10V dimming standard on all models

8-level lumen adjustable on selected models

ANSI C136.41 (7 pin NEMA) receptacle included

Standard secondary 20kA surge protector

TECHNICAL SPECIFICATIONS

COMPLIANCE

UL Listed

Suitable for wet locations

IESNA LM79 & LM-80 Testing

PacLights LED luminaires have been tested by an independent laboratory in accordance with IESNA LM-79 and LM-80.

DLC Qualification

Selected models of this product are on the Design Lights Consortium (DLC) Qualified Products List and are eligible for rebates from DLC Member Utilities. To view our DLC qualified products, please consult the DLC Qualified Products List at www.design-lights.org/qpl

LED CHARACTERISTICS

LEDs

Long-life, high-efficacy, surface-mount LEDs

Lifespan

100,000-hour LED lifespan based on IES LM-80 results and TM-21 calculations

Color Rendering Index

>70

Beam Angle

Type V; 155°

Color Uniformity

PacLights' range of Correlated Color Temperature follows the guidelines of the American National Standard for Specifications for the Chromaticity of Solid State Lighting (SSL) Products, ANSI C78.377-2017

ELECTRICAL

Drivers

0-10V Dimmable; Input Voltage: 100-277V (UV models), 50-60 Hz; or 277-480V (HV models), 50-60 Hz. Power Factor > 0.9; THD <15%

Surge Protection

10kA(driver) + 20kA(secondary)

Control Receptacle

ANSI C136.41 (7 pin or 3 pin NEMA) controls compatible

CONSTRUCTION

IP Rating

IP 66 Rated

Ambient Temperature

Suitable for up to 50° C (122° F) ambient temperature

Cold Weather Starting

The minimum starting temperature is -40 F°/-40° C

Housing

Die-cast aluminum housing

Gaskets

Silicon Gaskets

Finish

Our environmentally friendly polyester powder coatings are formulated for high-durability and long-lasting color, and contain no VOC or toxic heavy metals.

Mounting Methods

Fits most standard arms. 4-Bolt mount bracket supplied fits 1-1/4" nominal pipe (1.50" OD) or 2" nominal pipe (2.375" OD). Fixture can be tilted at the angles of up to 5°. The optical assembly can be rotated at the angles of ±165°.

Green Technology

Mercury and UV free, and RoHS compliant. Polyester powder coat finish formulated without the use of VOC or toxic heavy metals.

Lens

Polycarbonate

Vibration Testing

Vibration tested to 3g level per ANSI C136.31-2018

OTHER

5-Year Limited Warranty**

The PacLights 5-year, limited warranty covers light output, driver performance and paint finish.

**PacLights's warranty is subject to all terms and conditions found at paclights.com/warranty

PERFORMANCE

FHMA™ 200

200W	4000K Neutral	5000K Daylight	5700K Cool white
LUMENS	28,400	28,600	28,800
LM/W	142	143	144

FHMA™ 450

450W	4000K Neutral	5000K Daylight	5700K Cool white
LUMENS	63,900	64,350	64,800
LM/W	142	143	144

FHMA™ 600

600W	4000K Neutral	5000K Daylight	5700K Cool white
LUMENS	83,400	83,580	83,760
LM/W	139	139	139

FHMA™ 300

300W	4000K Neutral	5000K Daylight	5700K Cool white
LUMENS	42,600	42,900	43,200
LM/W	142	143	144

FHMA™ 500

500W	4000K Neutral	5000K Daylight	5700K Cool white
LUMENS	74,279	74,438	74,597
LM/W	142	143	144

FHMA™ 750

750W	4000K Neutral	5000K Daylight	5700K Cool white
LUMENS	106,369	106,458	106,545
LM/W	139	139	139

ORDERING INFORMATION

FHMA™

Family	Model	Input Voltage	Color Temp	Options
FHMA	—	—	—	—
	200	200w	UV 100-277v	2700 ¹ 2700K
	300	300w	HV 277-480v	3000 ¹ 3000K
	450	400w		4000 4000K
	500	500w		5000 5000K
	600	600w		5700 ¹ 5700K
	750	750w		
				GS glare shield
				TLP photocell control
				DLH photocell + daylight harvesting control
				DLM photocell + daylight harvesting + midnight dimming control

Note 1) available for special order

OPTIONS

CONTROLS

PacLights advanced electronic **SE-TLP Series** Photocontrol provides a unique, durable, and multi-volt control especially designed for 15 years of operation. It utilises inter-locking base/cap design for excellent environmental housing. High temperature base material, along with a UV stabilised, opaque housing ensure our control will last years without degradation. PacLights uses a process of IR filtering a phototransistor which in turn gives a human eye response along with long-term, drift free light sensing for the life of the control.



- Multi-volt operation
- Daylight harvesting models
- Mid-Night dimming models
- High-temperature components
- MOV surge protection
- Meets or exceeds ANSI C136.10

for detail refer to **SE-TLP Series** specification

GLARE SHIELD

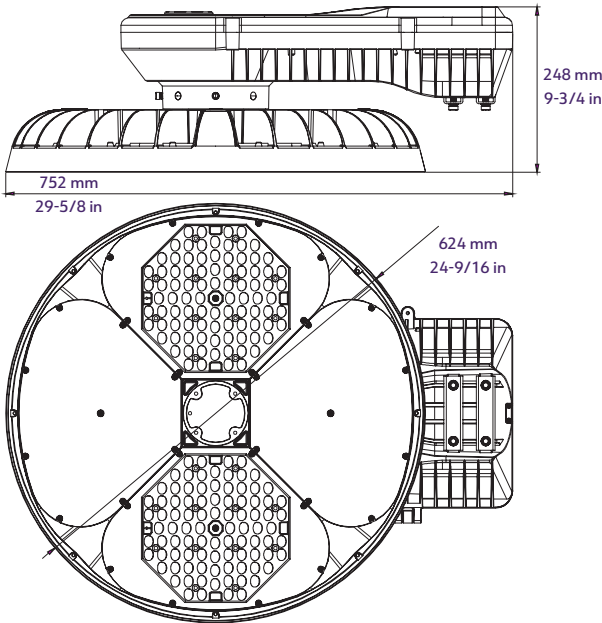
With many ports, railroads and highways located near residential, tourist and conservation areas, facilities must be able to install lighting systems that avoid unwanted illumination onto adjacent properties. PacLights engineered optical systems include glare shield that control light and distribute it on the task at hand to limit light trespass. This allows facilities to install luminaires and poles where they are needed for maximum effectiveness.

AC-HMS-GS
glare shield

DIMENSIONS

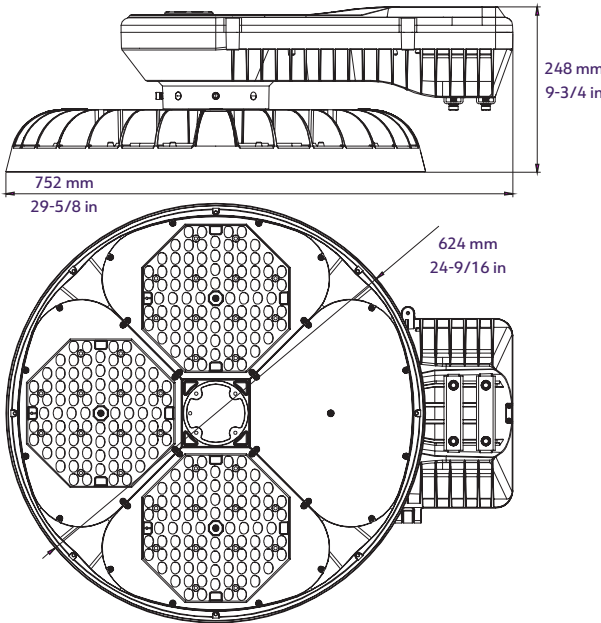
FHMA-200/300

Weight 54 lbs
EPA 1.49



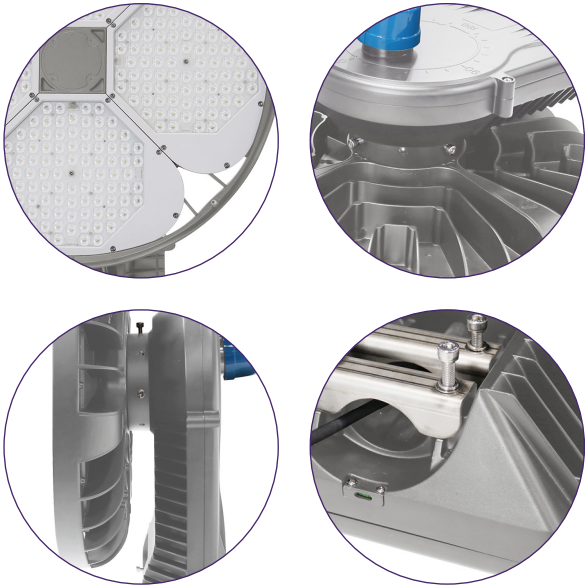
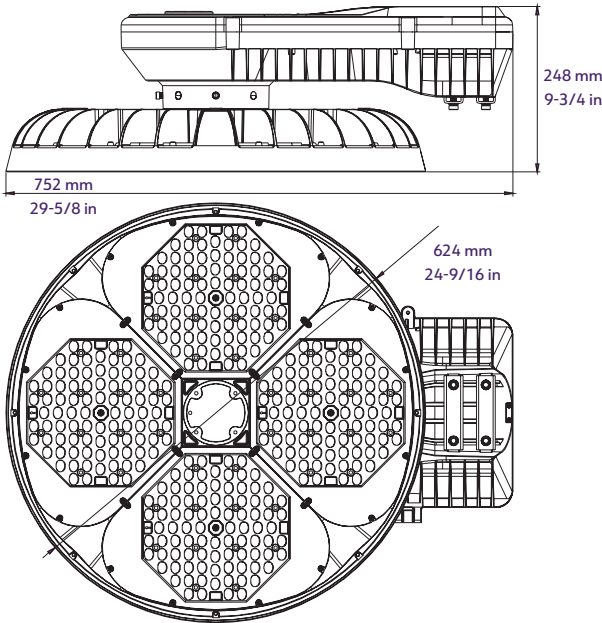
FHMA-450/500

Weight 62 lbs
EPA 1.49



FHMA-600/750

Weight 70 lbs
EPA 1.49



FINISHES

all models Roadway Gray

LIGHT MODULES

FHMA-200/300	2
FHMA-450/500	3
FHMA-600/750	4