



OVERVIEW

The FLHS series LED high bay comes standard with integrated lighting control (microwave occupancy & photocell) to reduce energy costs and help extend the life of the luminaire. It is an ideal one-for-one replacement to HID or fluorescent conventional high bay systems.

APPLICATION

Warehouse, manufacturing and other large indoor spaces with ceiling heights up to 50'.

FEATURES

- Limited Warranty: 7 Years
- Efficacy: up to 135 LPW
- Lumen Output: 14,700- 56,000 LM
- Wattage: 110 - 420 W



Project:

Type:

Prepared By:

Date:

Models

Model	Length (FT)	Watts(W)	Lumens (LM)	Efficacy (LPW)
FLHS2D110	2	110	14700	134
FLHS2D162	2	162	21900	135
FLHS2D223	2	223	28900	130
FLHS4D223	4	223	29600	133
FLHS4D321	4	321	42700	133
FLHS4D420	4	420	56000	133

*Lumen Output based on universal voltage models at 5000K. Also available in Color Temperatures of 4000K and 5700K.

Technical Specifications

Warranty

Paclights warrants these LED products will be free from defects in materials and workmanship for a period of seven (7) years from the date of delivery to the end user, including coverage of light output, color stability, driver performance and fixture finish. Please refer to our full warranty.

Qualifications

ETL Listed

IESNA LM79 & LM-80 Testing:

Paclights LED luminaires have been tested by an independent laboratory in accordance with IESNA LM-79 and LM-80.

DLC Qualification:

Selected models of this product are on the Design Lights Consortium (DLC) Qualified Products List and are eligible for rebates from DLC Member Utilities. To view our DLC qualified products, please consult the DLC Qualified Products List at www.designlights.org/qpl

Construction

IP Rating:

Suitable for Damp Location, TYPE IC

Ambient Temperature:

Suitable for 45° C (113° F) ambient temperature

Cold Weather Starting:

The minimum starting temperature is -4 F°/-20° C

Housing:

Durable cold rolled steel housing provides strength and uniformity. Luminaire is pre-painted to enhanced smooth finish and frosted Lens.

Mounting Methods:

- Chain Kit (hook included, chains not included)
- Aircraft Cable Kit (optional)
- Surface Mount (optional)
- Pendant Hanger (optional)

Green Technology:

Mercury and UV free, and RoHS compliant. Polyester powder coat finish formulated without the use of VOC or toxic heavy metals.

Lens:

Frosted or Clear

Electrical

Drivers:

- 0-10V Dimmable.
- Input Voltage: Universal 120-277V, 50-60 Hz;
- Optional 480v
- Power Factor : > 0.95
- Operating Temperature: -4°F (-20°C) to 113°F(45°C)

LED Characteristics

Lifespan:

50,000 hour LED lifespan based on IES LM-80 results and TM-21 calculations.

LEDs:

Multi-chip, high output, long-life LEDs

Color Rendering Index:

>82

Color Temperatures:

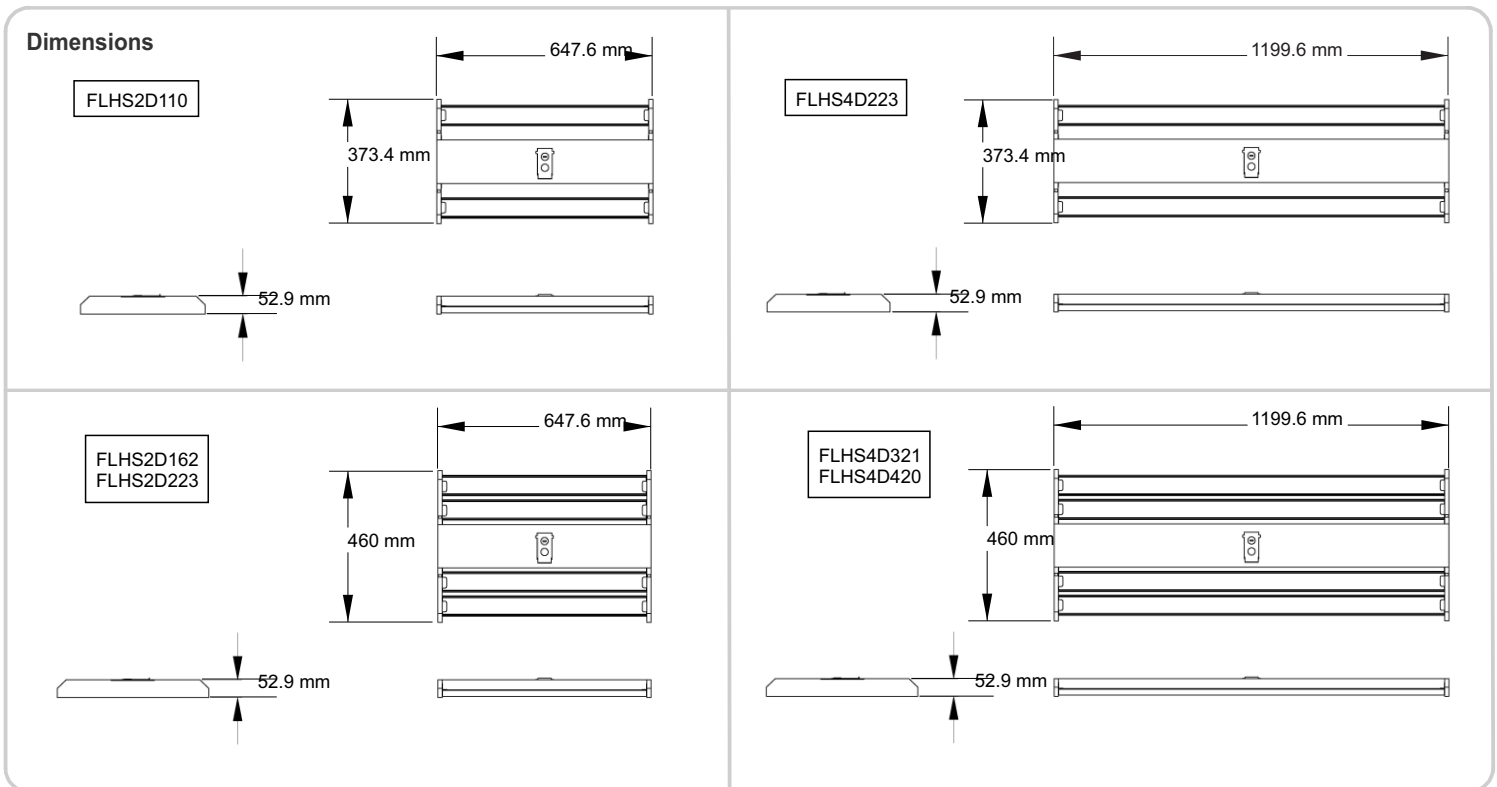
4000K, 4500K, 5000K

Finish

Our environmentally friendly polyester powder coating are formulated from high-durability and long-lasting color, and contains no VOC or toxic heavy metals.

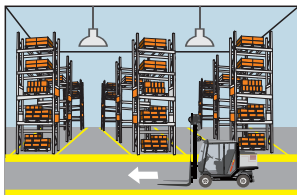
Ordering Matrix

Model	Housing Length	Wattage	Color Temperature	Occupancy Sensor	Lens Type
FLHS	2D	162	5000	MM	FL
	2D = 2 Feet (for 110W, 162W, 223W)	110 = 110 W 162 = 162 W	4000 = 4000 K 4500 = 4500 K 5000 = 5000 K	MM = Microwave (included) IR = Infrared EM = External Microwave	FL = Frosted (included) CL = Clear
	4D = 4 Feet (for 223W, 321W, or 420W)	223 = 223 W 321 = 321 W 420 = 420 W			

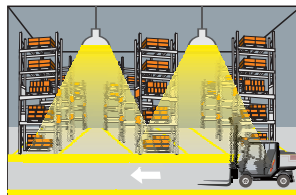


Integrated Microwave Occupancy/Photo Sensor

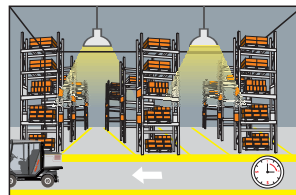
FLHS features an innovative and programmable motion detector with HF system 5.8GHz. Motion can be detected through plastic, glass and thin non-metal materials. It can be mounted as high as 50ft. The sensors allow energy savings without compromising comfort. With its signature 3-step dimming function, it is perfect for use in areas that require a light change notice before totally switching off the light. Daylight (on/off) sensor is integrated for maximum energy saving.



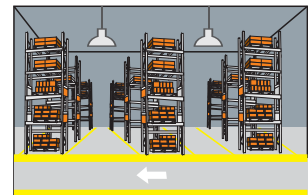
With sufficient ambient light, the sensor will not turn on the lighting fixture.



With insufficient ambient light, the sensor will turn on the lighting fixture when motion is detected.

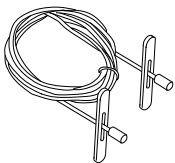


After Hold Time, the sensor dims the fixture to a Stand-by dimming level if no new motion triggers.

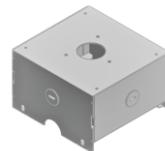


After Stand-by Period, the sensor turns off the fixture if no motion is detected in its detection zone.

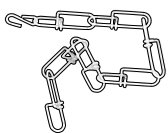
Hold Time adjustable: **5s(default)** / 30s / 90s / 3min / 20min / infinity
 Daylight (ambient light threshold) adjustable: 2lux / 5lux / 10lux / 25 lux / 50lux / 100lux / **Disable(default)**
 Stand-by period adjustable: 0s / **5s(default)** / 5min / 10min / 30min / 1h / infinity
 Stand-by dimming level adjustable: **10%(default)** / 20% / 30% / 50%



AC-LHS-AC
 112 in. Aircraft Cable Pair used for mounting the FLHS Linear High Bay onto ceiling beams.



AC-LHS-PEM
 FLHS Pendant Mount is installed on the top of the luminaire. Power supply cord can be routed through a 1/2" conduit which to be fastened on to the top of the mount.



AC-LHA-CHN
 40 in. Chain Pair is used for mounting the FLHS Linear High Bay onto ceiling beams, hooks, or other types of mounting methods.



AC-LHS-CL2FT
 Clear Lens for
 FLHS2D110 (requires 2)
 FLHS2D162/223 (requires 4)



AC-LHS-CL4FT
 Clear Lens for
 FLHS4D223 (requires 2)
 FLHS4D321/420 (requires 4)