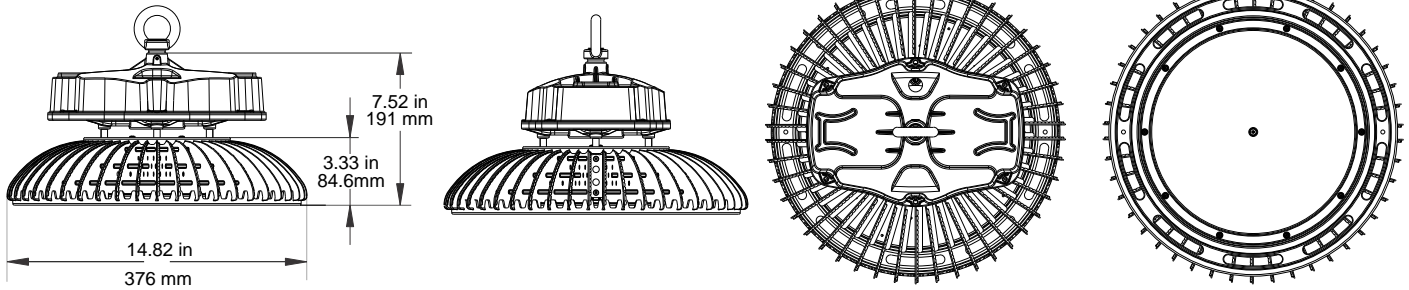


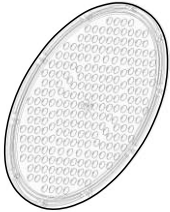
Dimensions



ACHULEN60A

- 60° Len for FHU100

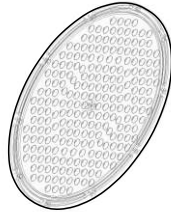
ACHULEN60A is a Lens used to replace the default lens for the FHU100 luminaire in order to change the beam angle from 120° to 60°.



ACHULEN60B

- 60° Len for FHU 200

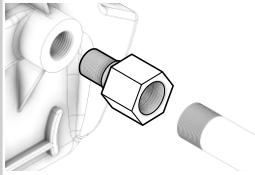
ACHULEN60B is a Lens used to replace the default lens for the FHU200 luminaire in order to change the beam angle from 120° to 60°.



ACHUCF-

(Female) Pendant Mount

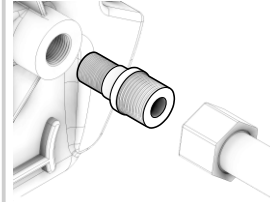
ACHUCF is a Pendant Mount Adaptor for NPT 3/4" conduit, Female



ACHUCM-

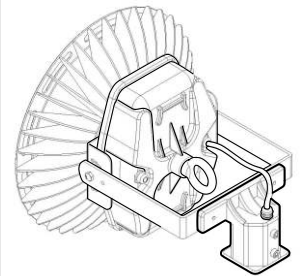
(Male) Pendant Mount

ACHUCM is a Pendant Mount Adaptor for NPT 3/4" conduit, Male

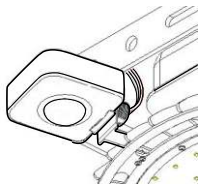


ACFLSF- Slipfitter Mount

The Slipfitter should be mounted onto a hollow round 2" part with AC Power cords running inside of it.



ACHUOS PIR Occupancy Detection (Indoor)

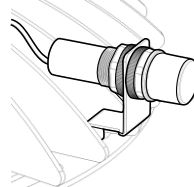


ACHUOS detects changes in the infrared energy given off by occupants as they move within the field-of-view. When occupancy is detected, a self-contained relay switches on the connected lighting load. The sensor is line powered and can switch line voltage. An internal timer, factory set at 15 seconds, keeps the lights on during brief periods of inactivity.

It is ideal for high mounted areas such as warehouses, manufacturing and other high ceiling applications, 15 to 30 ft mounting heights, 15 to 20 ft radial coverage overlaps area lit by a typical high bay fixture at 30 ft.

Time delay is adjustable from 30 seconds to 30 min. Sensor Sensitivity Range is adjustable from 50% to 100%. Adjustable Ambient Light Level can detect whether to turn a fixture on or off by determining if enough light from other sources, such as sunlight, is sufficiently illuminating an area.

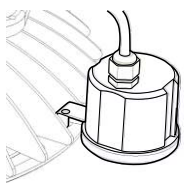
ACHUPS Daylight Harvesting (Indoor)



Faced with the skyrocketing cost of energy and environmental concerns, builders, architects and lighting experts are increasingly turning to daylighting as a primary source of illumination, and proper daylight can increase the comfort. To take full advantage of daylight integration, buildings should have automated controls that either turn on or dim artificial light in response to the available daylight within a space. This is called 'daylight harvesting'.

ACHUPS supplies a simple and effective solution for daylight harvesting. By connecting to 1-10V interface, ACHUPS uses a photocell to measure ambient lux level and automatically calculate how much artificial light is needed, which then converts the amount of light to 1-10V dimmable LED drivers. 1-10v dimmable drivers adjust the lighting output according to the signal from daylight sensor.

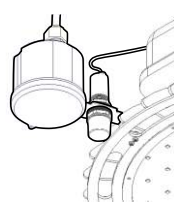
ACHUMO Microwave Occupancy Detection



ACHUMO is an innovative and programmable motion detector with HF system 5.8GHz. Motion can be detected through plastic, glass and thin non-metal materials. It can be mounted as high as 48 ft.

The sensor allow energy saving with its signature 3-step dimming function, it is perfect for us in areas that require a light change notice before totally switching off the light. Daylight (on/off) sensor is integrated for maximum energy saving.

ACHUMO+ ACHUPS Microwave Occupancy Detection with Daylight Harvesting



When ACHUMO microwave sensor works together with ACHUPS daylight harvesting sensor, the lighting fixture will dim the light in response to the available daylight in the area, when the area is being occupied.