

**OVERVIEW**

The FFL Series of LED flood lights have a broad range of applications and wattages available. These floods can handle extreme weather conditions and just like all of our fixtures, the FFL series is IP65 rated. These floods are great solution for anything from a 10W flood all the way up to a 200W unit with high and low voltage options. Some applications for this series include: Field Lighting, Roadways, Construction, and Temporary Lighting.

FEATURES

- Limited Warranty: 5 Years
- Efficacy: up to 98 LPW
- Lumen Output: 900-26,000 L
- Wattage: 10- 200 W



Project:

Type:

Prepared By:

Date:

Models

Lumen Output based on Universal voltage models at 5000K. Also available in Color Temperatures of 4000 K, 4500K, and 5700K.

Model	Watts(W)	Lumens (LM)
FFL10	10	909
FFL20	20	1800
FFL30	30	2700
FFL50	50	4634
FFL100	100	9305
FFL150	150	14825
FFL200	200	19290

Technical Specifications**Warranty**

PacLights warrants these LED products will be free from defects in materials and workmanship for a period of five (5) years from the date of delivery to the end user, including coverage of light output, color stability, driver performance and fixture finish. Please refer to our full warranty.

Qualifications**ETL Listing:**

Suitable for Wet Locations

IESNA LM79 & LM-80 Testing:

PacLights LED luminaires have been tested by an independent laboratory in accordance with IESNA LM-79 and LM-80.

DLC Qualification:

Selected models of this product are on the Design Lights Consortium (DLC) Qualified Products List and are eligible for rebates from DLC Member Utilities.

To view our DLC qualified products, please consult the DLC Qualified Products List at www.designlights.org/qpl

Construction**IP Rating:**

Ingress Protection rating of IP65 for dust and water

Ambient Temperature:

Suitable for up to 50° C (122° F) ambient temperature

Cold Weather Starting:

The minimum starting temperature is -40 F°/-40° C

Thermal Management:

Superior thermal management with external Air-Flow fins.

Housing:

Aluminum housing with powder coating.

Mounting Methods:

Heavy-duty Trunnion Mount included. Slipfitter mounting option available.

Lens:

Tempered Class

Gaskets:

Silicon Gaskets

Finish:

Our environmentally friendly polyester powder coating are formulated from high-durability and long-lasting color, and contains no VOC or toxic heavy metals.

LED Characteristics**Lifespan:**

100,000-hour LED lifespan based on IES LM-80 results and TM-21 calculations.

LEDs:

Multi-chip, high-output, long-life LEDs

Color Stability:

LED color temperature is warrantied to shift no more than 200K in CCT over a 5 year period.

Color Uniformity:

PacLights' range of CCT follows the guidelines of the American National Standard for Specifications for the Chromaticity of Solid State Lighting (SSL) Products, ANSI C78.377-2011

Color Rendering Index:

>70

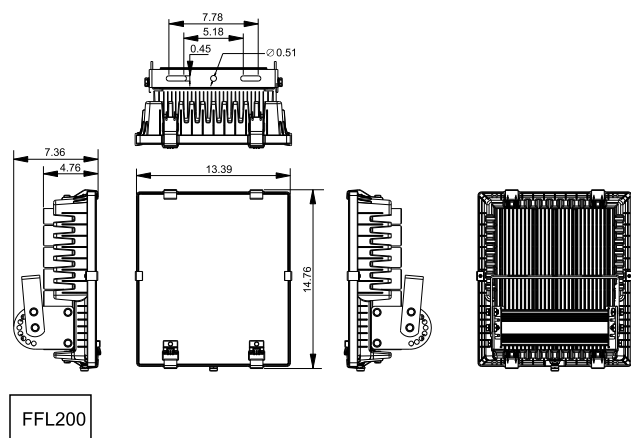
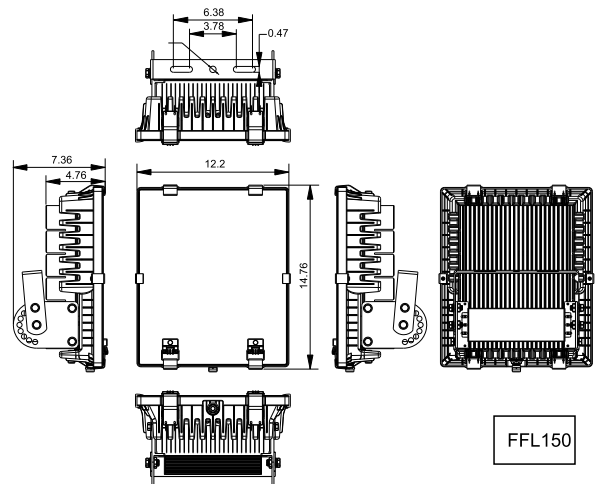
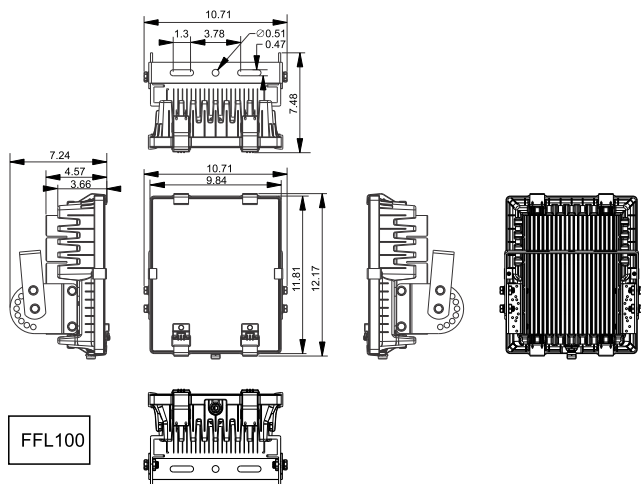
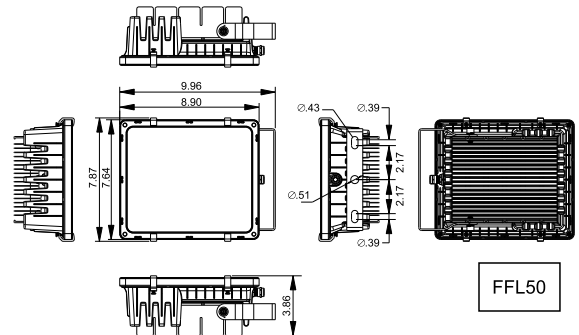
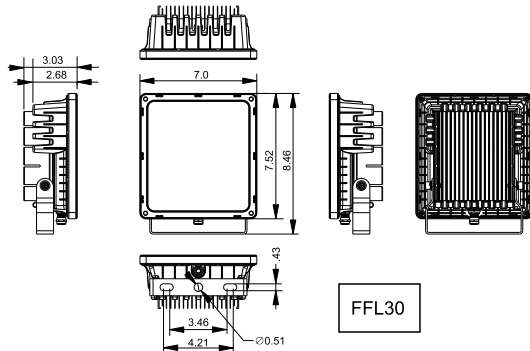
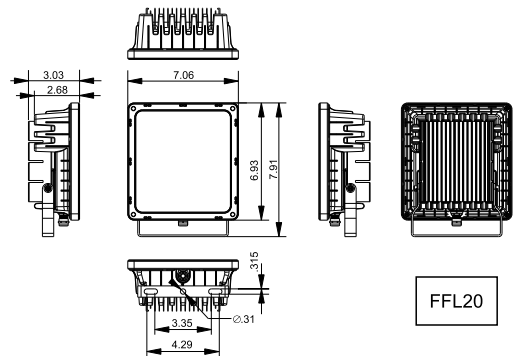
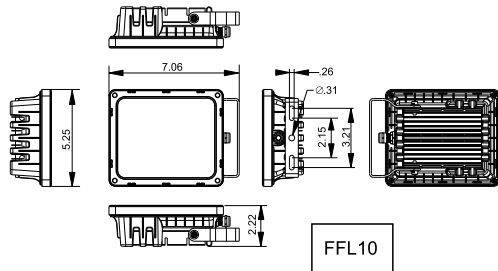
Electrical**Drivers:**

100-277V, 277-480V (high voltage" -HV" models)
50-60 Hz, Power Factor > .95

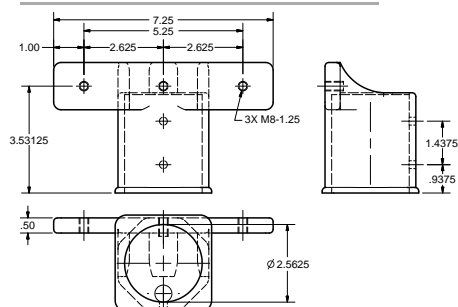
Ordering Matrix

Family	Watts	Voltage	Color Temperature	Optional Add-ons
FFL	50	LV	50	SF
	10 = 10w 20 = 20w 30 = 30w 50 = 50w 100 = 100w 150 = 150w 200 = 200w	LV = 100-277 HV = 277-480 (100w/150w/200w)	30 = 3000 K 40 = 4000 K 50 = 5000 K 57 = 5700 K	SF = ACFLSF [For FFL50, FFL100, FFL150, or FFL200]

Dimensions (in.)



Optional Add-ons - field installed



SKU	Description
ACFLSF	Slipfitter Mount, with stainless steel screws

