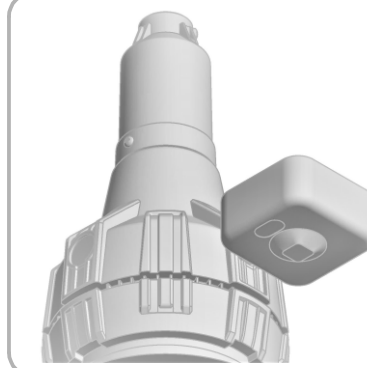


**Includes:** XHB150, XHB200

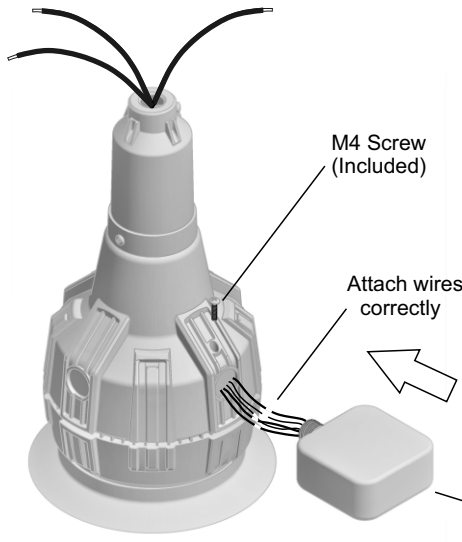


**CAUTION:** PLEASE FOLLOW THIS INSTRUCTION MANUAL CAREFULLY TO PREVENT ANY INJURIES OR COMPLICATIONS THAT MAY ARISE.  
**WARNING:** Before installing or maintaining the luminaire, make sure all powers are **TURNED OFF**.  
 Verify that the supply voltage is correct by comparing it with the label information on all fixtures. Make all connections in accordance with the NEC requirements, and make sure all luminaires are properly secured to prevent any wire complications. This luminaire is not to exceed the maximum ambient temperature rating noted on the specification sheet.

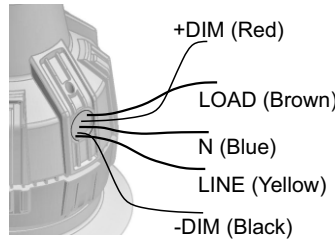


**SE-BC-BRI819**  
 Microwave Motion Control

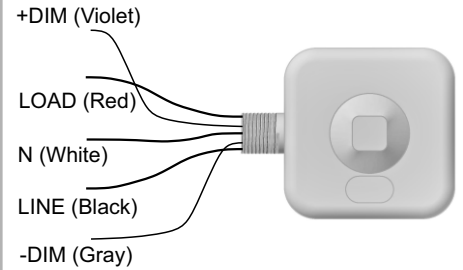
Bi-Level Microwave Motion Sensor- It controls 0-10 VDC LED drivers or dimming ballasts. It offers 3 levels of light control: 100%--dimming light (0,10%,30%,50%)--off. It's detection range is 50ft, radius is max 30ft, and working frequency is 5.8GHz.



The XHB LED luminaire has an optional Sensor which can be used to turn the fixture on and off based on motion nearby. The Sensor has 5 wires that need to be attached to the side of the XHB Luminaire. Detail of the wires are in the next view. Loosen the M4 screw from the XHB Luminaire. After the wires are attached correctly you can then install the Sensor into the XHB Luminaire. Tighten the M4 screw to secure the Sensor in place.

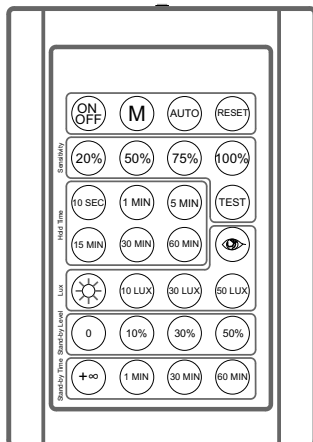


The XHB LED luminaires optional Sensor has 5 wires, 2 wires for the DIM Sensor and 3 wires for LOAD, LINE, and NEUTRAL that need to be attached to the side of the XHB Luminaire. The wires must be attached correctly before you can then install the Sensor into the XHB Luminaire.



## SETTING BY REMOTE CONTROL

The Microwave Motion Control unit comes with an optional remote control that allows you to control the lighting fixture by presetting the Sensor based on motion. When there is a person nearby the XHB Luminaire will turn on. The light-control setting allows you to adjust the desired dim settings. During an absence, the XHB Luminaire will turn off after the dimming time has elapsed.



	Press the "on/off" button, the light goes to permanent on or permanent off mode, the sensor is locked. Press "AUTO" to quit from this mode.		The button "Test" is for testing sensitivity purpose only, the sensor goes to test mode (hold-on time is only 2s) automatically after commissioning, meanwhile the stand-by period and daylight sensor are disabled. Press "AUTO" to quit from this mode.
	Memorize a list of specific parameters in "M" button as one touch button.		
	Press "AUTO" button, the sensors starts to work and all parameters remains the same as the latest status.		Press "RESET" button, all parameters go back to default settings: 
	Select as appropriate to adjust sensor sensitivity.		The time of light fixture remains at programmed 100% level after motion is not detected.
	Press this button, the latest surrounding lux value overwrites previous lux value learned, and is set as the daylight threshold. This feature enables the fixture to function well in any real application circumstance.		Select /10LUX/30LUX/50LUX/ threshold for sensor to turn light fixture ON. Select , current surrounding lux value as daylight lux threshold, select , the built-in daylight sensor stops working, and all motions detected could turn the light fixture on, no matter how bright the natural light is.
	Press the buttons of "stand-by dimming level" to set the stand-by dimming level at 0/10%/30%/50%: Note:  means on/off control;		Press the button of "stand-by period (corridor function)" to set stand-by period at 1 min/30 min/60 min/+∞; Note: "+∞" means bi-level dimming control, fixture never switches off.