



RISK OF FIRE AND ELECTRICAL SHOCK. FIXTURE MUST BE INSTALLED BY A QUALIFIED ELECTRICIAN ONLY IN ACCORDANCE WITH NATIONAL, LOCAL BUILDING AND ELECTRICAL CODES. DISCONNECT POWER AT ELECTRICAL PANEL BEFORE SERVICING.

IMPORTANT SAFETY INSTRUCTIONS.

1. Read all instructions completely before beginning. Keep these instructions in safe place for future reference.
2. To reduce risk of fire and over-heating, make sure all connections are tight.
3. Turn off the electrical power before proceeding.



CAUTION: RISK OF FIRE OR ELECTRIC SHOCK

LED Recessed Kit installation requires knowledge of luminaires electrical systems. If not qualified, do not attempt installation. Contact a qualified person.

WARNING - Risk of fire or electric shock. LED Recessed Kit installation requires knowledge of luminaires electrical systems. If not qualified, do not attempt installation. Contact a qualified electrician.

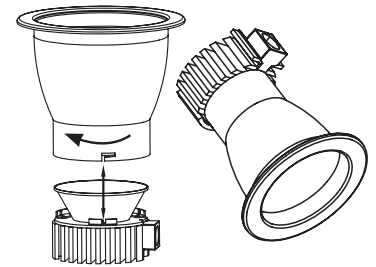
WARNING – Risk of fire or electric shock. Install these kits only in the luminaires that has the construction features and dimensions shown in the photographs and/or drawings and where the input rating of the recessed kit does not exceed the input rating of the luminaire.

WARNING – To prevent wiring damage or abrasion, do not expose wiring to edges of sheet metal or other sharp objects.

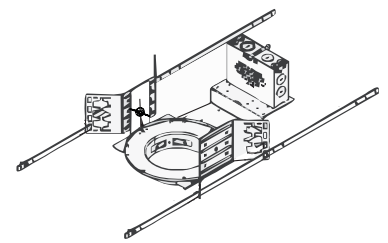
Do not make or alter any open holes in an enclosure of wiring or electrical components during kit installation.

THIS RECESSED KIT IS ACCEPTED AS A COMPONENT OF A LUMINAIRE WHERE THE SUITABILITY OF THE COMBINATION SHALL BE DETERMINED BY AUTHORITIES HAVING JURISDICTION.

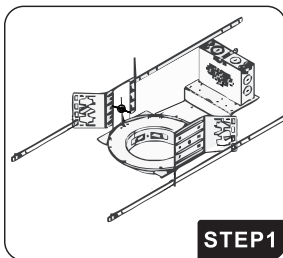
Please examine all parts that are not intended to be replaced by the retrofit kit for damage and replace any damaged parts prior to installation of the retrofit kit.



The LED light engine and trim may be shipped separately. To assemble, align the trim in position and slide it clockwise until secured.

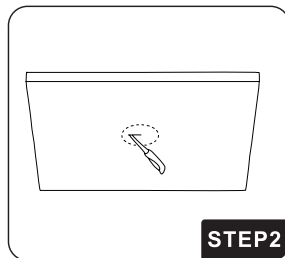


New Construction Frame Kit
(order separately)



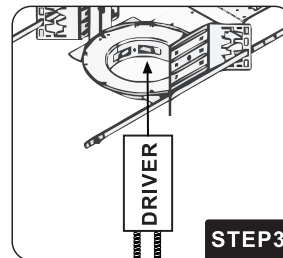
STEP1

Install the housing frame kit into the ceiling. Slide the housing along the bar hangers to adjust its horizontal position.



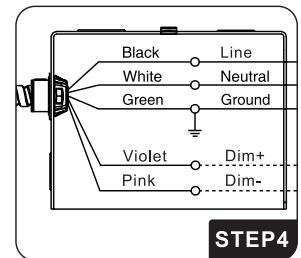
STEP2

Cut an opening based on the mounting frame diameter as specified: 4" frame: 4.0" to 4.7"; 6" frame: 6.0" to 6.7"; 8" frame: 7.7" to 8.4"; 10" frame: 10.0" to 10.7"



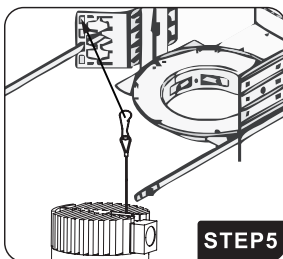
STEP3

Install the driver box into the junction box, then open the J-box. For remodel applications, disconnect the J-box supply wires and remove the existing driver or ballast.



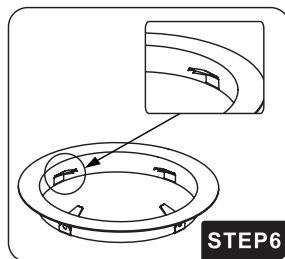
STEP4

Wiring as shown in the diagram.



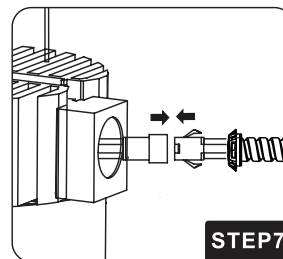
STEP5

Close the J-box, then secure the driver box to the ceiling using screws. Attach the safety hook to the bracket hole.



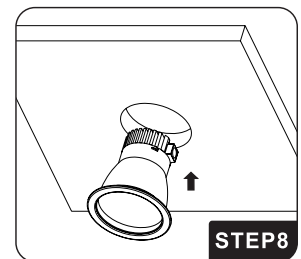
STEP6

Install 4 clips if they are not already present on the existing mounting frame.



STEP7

Connect the black connector of the LED engine to the black connector at the end of the flex conduit from the driver box. Then insert the connector into the LED engine opening.



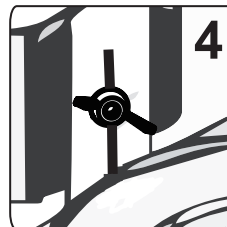
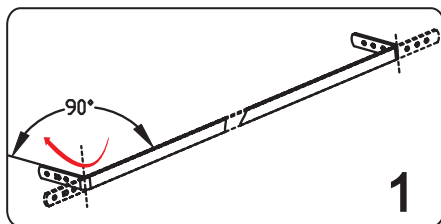
STEP8

Install the LED downlight into the ceiling. Once installation is complete, restore power.

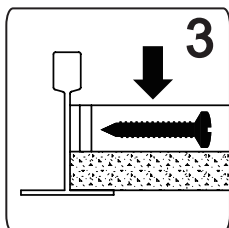
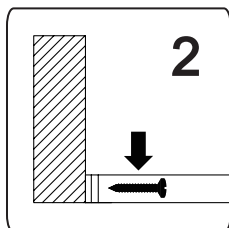
NEW CONSTRUCTION FRAME KIT

4" / 6" / 8" / 10"

Use the tool as shown (Figure 1) to bend the brackets on the housing frame. Note: The bending length should be adjusted according to the actual installation conditions.



Adjust the nut on the bracket until the bottom of the bracket ring is flush with the ceiling. Complete the installation of the housing frame (Figure 4).



Secure the housing frame brackets with screws as shown. For wooden ceilings, refer to Figure 2. For T-bar ceilings, refer to Figure 3.

