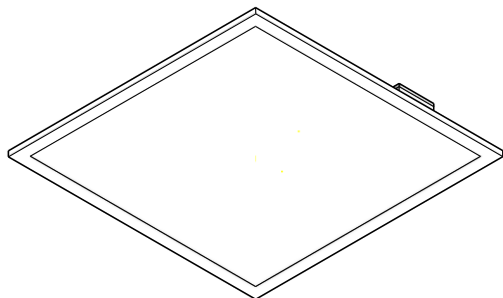


**Includes:** FPAN22D28, FPAN24D46, FPAN14D28



**CAUTION:** PLEASE FOLLOW THIS INSTRUCTION MANUAL CAREFULLY TO PREVENT ANY INJURIES OR COMPLICATIONS THAT MAY ARISE.

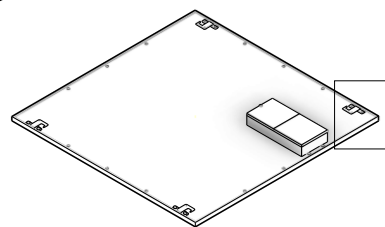
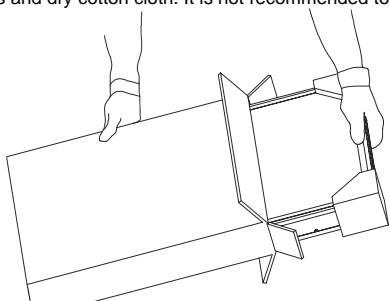
**WARNING:** Before installing or maintaining the luminaire, make sure all powers are **TURNED OFF**.

Verify that supply voltage is correct by comparing it with the label information on all fixtures.

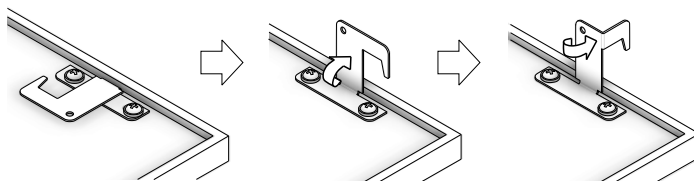
Make all connections in accordance with the NEC requirements, and make sure all luminaries are properly secured to prevent any wire complications. This luminaire is to always be installed with the lens facing down and its not to exceed the maximum ambient temperature rating noted on the specification sheet.

## STANDARD INSTALLATION STEPS

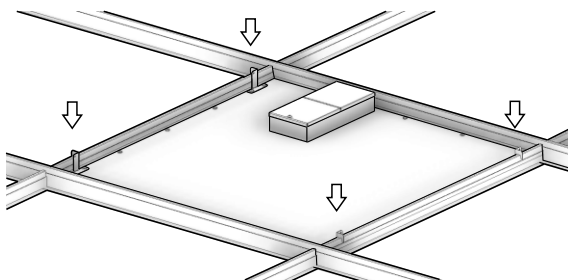
1. Carefully unpack unit and properly inspect for defects before installing. Wear work gloves to prevent dirt and oil from being transferred to the luminaire. Wearing gloves will also prevent the installer from getting cut with metal sharp corners. If cleaning is needed, use gloves and dry cotton cloth. It is not recommended to use hazardous chemicals.



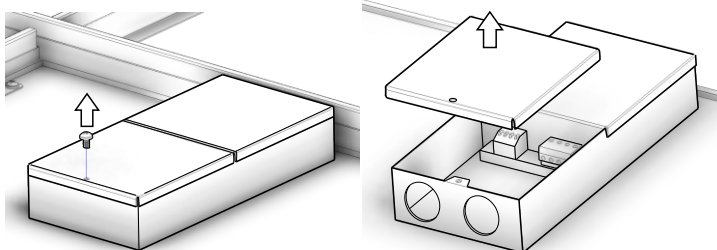
2. Lift up four ( four for 2x2, six for 1x4 and 2x4) mounting clips on the sides of the luminaire. You can do it by hand (Do wear work gloves) or use pliers.



3. Insert luminaire into T-bar ceiling grid. Secure safety cable to connection hole as needed to meet local seismic requirements. Safety cable and method of attachment to the building provided by contractor according to local building codes.



4. Remove electrical enclosure cover Carefully remove knockout for AC line input wires and 0-10 V control line. Install listed electrical fitting in the knockout holes for wire protection if needed.



Connect to AC Power Supply

AC-N  
AC-N  
AC-L  
AC-L

INPUT

GROUND

Remove this cover to run Power Supply wires

When installing a 0-10V Dimmer, remove this cover.

When installing a 0-10V Dimmer, use these terminals to install the positive and negative wires.

OUTPUT  
DIM +  
DIM -  
LED+  
LED-

DO NOT TOUCH WIRES  
They will already be connected to the LED Panel.

AC POWER SUPPLY

GROUND [GREEN] <<<<<  
HOT [BLACK] <<<<<  
NEUTRAL [WHITE] <<<<<

