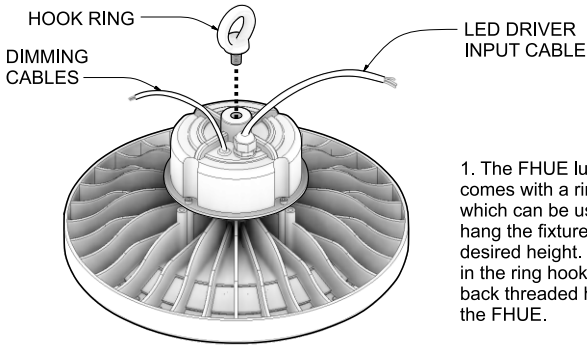


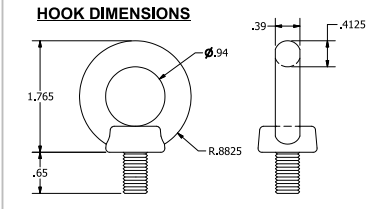
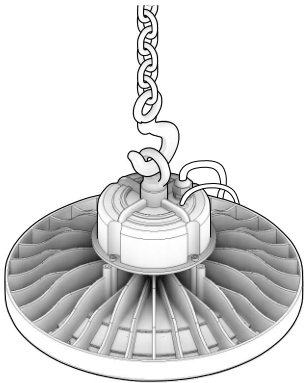
**Includes:** FHUE100, FHUE150, FHUE150-HV

**CAUTION:** PLEASE FOLLOW THIS INSTRUCTION MANUAL CAREFULLY TO PREVENT ANY INJURIES OR COMPLICATIONS THAT MAY ARISE.  
**WARNING:** Before installing or maintaining the luminaire, make sure all powers are **TURNED OFF**.  
 Verify that supply voltage is correct by comparing it with the label information on all fixtures.  
 Make all connections in accordance with the NEC requirements, and make sure all luminaires are properly secured to prevent any wire complications. This luminaire is to always be installed with the lens facing down and its not to exceed the maximum ambient temperature rating noted on the specification sheet.

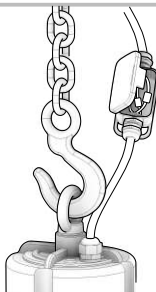
## (A) STEPS FOR RING HOOK INSTALLATION



1. The FHUE luminaire comes with a ring hook which can be used to hang the fixture to a desired height. Screw in the ring hook into the back threaded hole in the FHUE.



2. Use a hook to mount the FHUE to the desired height. Use the hook dimensions to determine a suitable size hook. (Not Included)

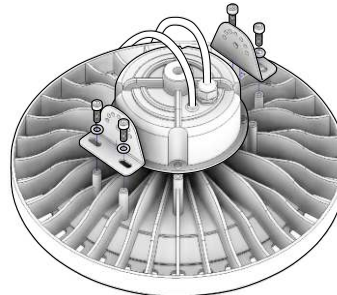


Follow the Wiring Diagram and properly wire the FHUE fixture to the power supply cables. Make sure the fixture is connected with the appropriate voltage power supply. All wiring must be installed by a certified electrician and must be compliant to NEC standards.

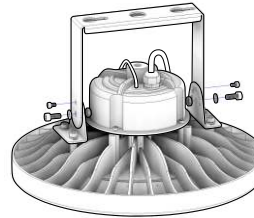
3. Run an AC 100-277V power supply cable with a Junction Box to a height approximately to the height of the fixture to properly connect the FHUE fixture to the Power Supply cable.

## (B) STEPS FOR TRUNNION MOUNT INSTALLATION (OPTIONAL)

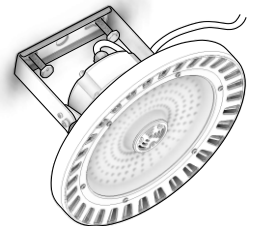
**MUST PURCHASE AC-HUE-TM TRUNNION MOUNT ASSEMBLY**



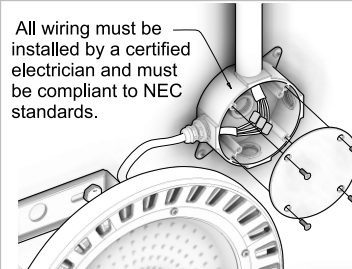
1. After purchasing Paclights' AC-HUE-TM trunnion mount, the first step will be to fasten the two angle brackets to the back of the FHUE fixture. The FHUE already comes with [4] Threaded spacers specifically designed for this application.



2. Once the angle brackets are secured to the fixture, bolt the trunnion mount to the angle brackets and secure it at a 90 deg angle.

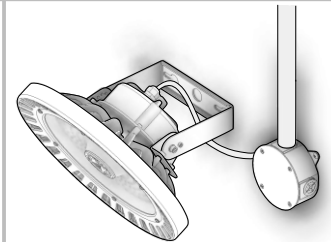


3. Fasten the FHUE to the mounting surface with the appropriate bolts. (Bolts not included)



All wiring must be installed by a certified electrician and must be compliant to NEC standards.

4. Run the LED driver cable from the FHUE into a junction box with 100-277 VAC power supply cable and complete the wiring.



6. Adjust the FHUE Fixture to the desired tilt angle.

5. Cover the Junction Box. (not included)

