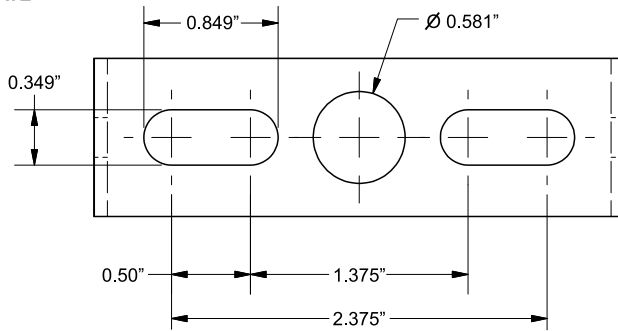


AC-FLA-TM30/50 Trunnion Mount

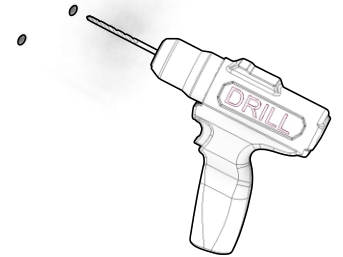
Includes: FFLA30 and FFLA50

CAUTION: PLEASE FOLLOW THIS INSTRUCTION MANUAL CAREFULLY TO PREVENT ANY INJURIES OR COMPLICATIONS THAT MAY ARISE.
WARNING: Before installing or maintaining the luminaire, make sure all powers are **TURNED OFF**.
 Verify that supply voltage is correct by comparing it with the label information on all fixtures.
 Make all connections in accordance with the NEC requirements, and make sure all luminaries are properly secured to prevent any wire complications. This luminary is to always be installed with the lens facing down and its not to exceed the maximum ambient temperature rating noted on the specification sheet.

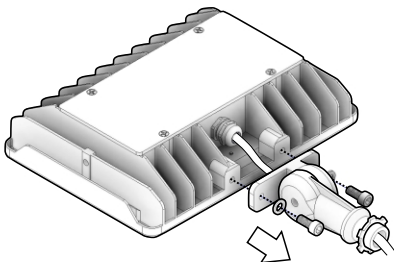
DRILLING TEMPLATE



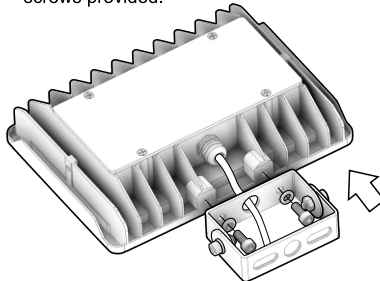
1. Drill holes on the mounting surface by following the Drilling Template to mount the AC-FLA-TM Trunnion mount to the desired height. (Keep the mounting location close to where the junction box is located.)



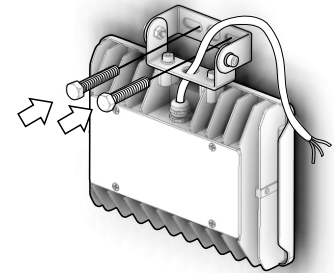
2. Using an allen wrench, remove the two socket head machine screws connecting the Knuckle Mount to the FFLA fixture.



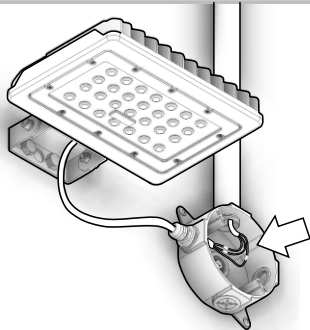
3. Fasten the AC-FLA-TM Trunnion Mount bracket to the fixture with the two machine screws provided.



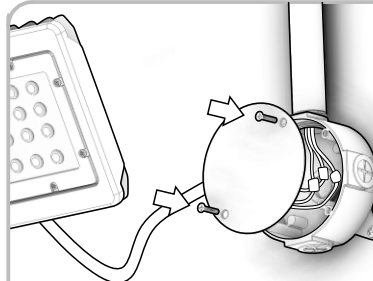
4. Align the AC-FLA-TM bracket to the holes drilled on the mounting surface and bolt the fixture to the wall. (Bolts not included)



5. Follow the Wiring Diagram and properly wire the FFLA fixture to the power supply cables. Make sure the fixture is connected with the appropriate voltage power supply. All wiring must be installed by a certified electrician and must be compliant to NEC standards.



6. Once all wiring is complete. Fasten the Cover to the Junction Box.



WIRING DIAGRAM

The LED Driver input cable consists of 3 conductors: ACL (black), ACN (white), and ground (green). These conductors are to be connected to a Power Supply Cable.

