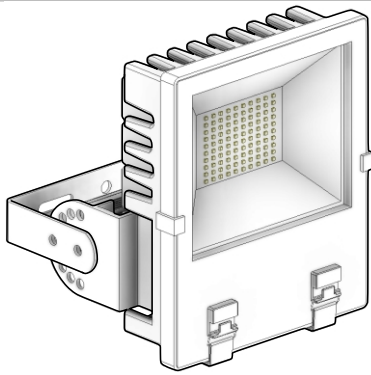
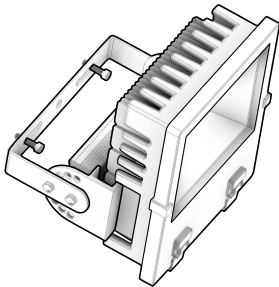


Includes: FFL10, FFL20, FFL30, FFL50, FFL100, FFL150, FFL200



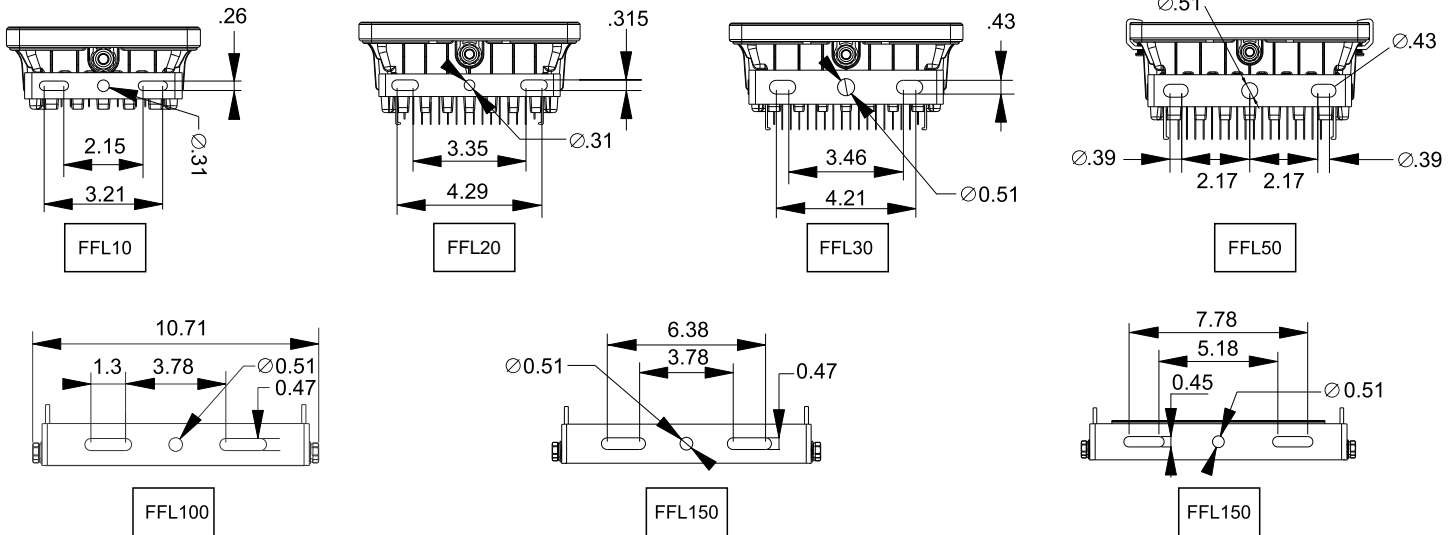
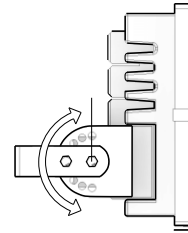
CAUTION: PLEASE FOLLOW THIS INSTRUCTION MANUAL CAREFULLY TO PREVENT ANY INJURIES OR COMPLICATIONS THAT MAY ARISE.
WARNING: Before installing or maintaining the luminaire, make sure all powers are **TURNED OFF**.
 Verify that supply voltage is correct by comparing it with the label information on all fixtures.
 Make all connections in accordance with the NEC requirements, and make sure all luminaries are properly secured to prevent any wire complications. This luminary is to always be installed with the lens facing down and its not to exceed the maximum ambient temperature rating noted on the specification sheet.

STANDARD INSTALLATION STEPS

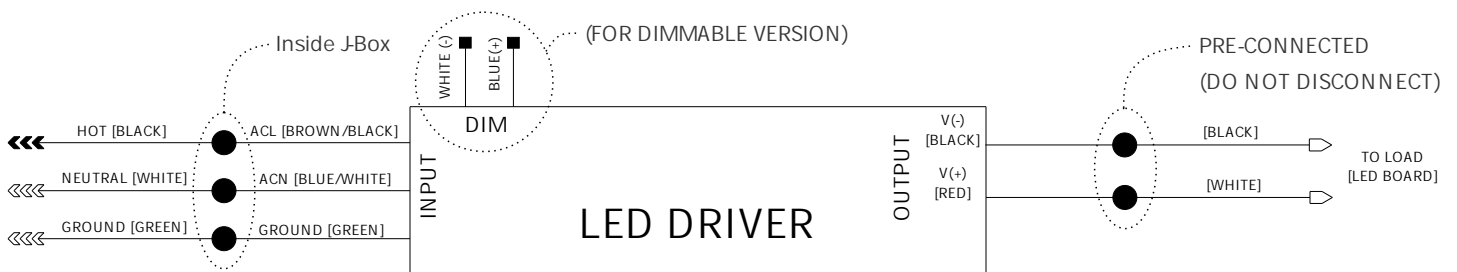


1a) Each FFL Luminaire comes with a Trunnion Mount attached to the back side of the fixture. This trunnion mount can be adjusted to various different angles in a range of 180. This is done by first removing the locking screws located on each side of the FFL.

1b) Depending on the FFL Light being installed, the size of the Trunnion Mount will vary. Please see the Trunnion Mount Dimensions to determine which drilling template to follow if the light is going to be installed surface mounted with the Trunnion Mount.



Using a J-Box (not included), Connect the ACL and the ACN from the driver to the conduit with the AC Power Supply cords. Follow the Wiring Diagram provided.



* LED DRIVER Input Ground (green) wire only available for selected fixtures.

If the Ground Wire is missing and the Power Supply includes a ground wire, connect the power supply ground wire to the fixture.