

## AC-ALB-SF Slipfitter Mount

### Includes:

FALB080, FALB100, FALB120, FALB150, FALB185, FALB240, FALB300



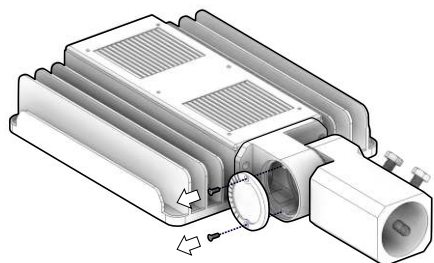
**CAUTION:** PLEASE FOLLOW THIS INSTRUCTION MANUAL CAREFULLY TO PREVENT ANY INJURIES OR COMPLICATIONS THAT MAY ARISE.

**WARNING:** Before installing or maintaining the luminaire, make sure all powers are **TURNED OFF**.

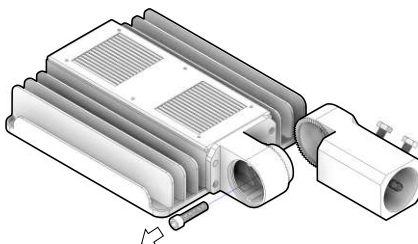
Verify that supply voltage is correct by comparing it with the label information on all fixtures.

Make all connections in accordance with the NEC requirements, and make sure all luminaries are properly secured to prevent any wire complications. This luminaire is to always be installed with the lens facing down and its not to exceed the maximum ambient temperature rating noted on the specification sheet.

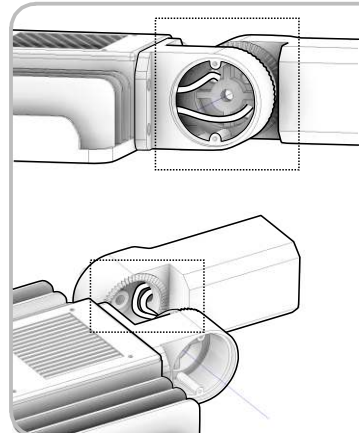
### STANDARD INSTALLATION STEPS



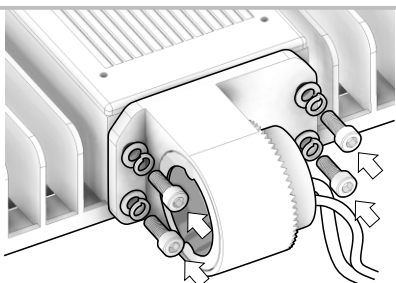
1. Use a Phillips Screwdriver, remove the two screws and remove the cap cover from the Slipfitter bracket.



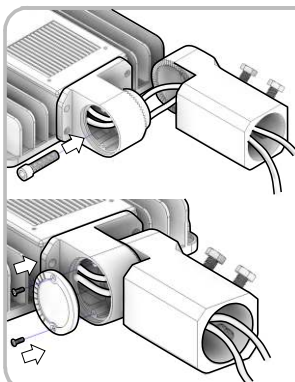
2. Use a Allen wrench, remove the socket head machine screw and disassemble the AC-ALB-SF slipfitter. Align the holes from the small bracket with the holes on the FALB and run the two cables inside the bracket opening.



3. If you are installing a FALB fixture with a dimmable driver. You will have two cables coming from the luminaire. Carefully run the cables through both brackets. The same applies for a non-dimmable driver fixture, with the exception that you will be running in one cable.



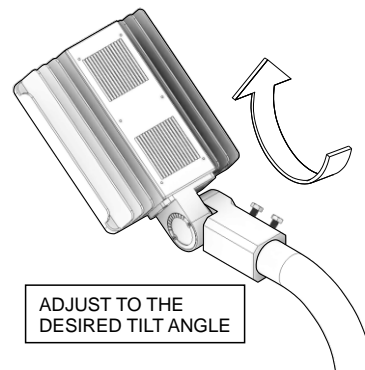
4. Fasten the small bracket to the FALB fixture with the provided socket head machine screws, lock-washers, and washers.



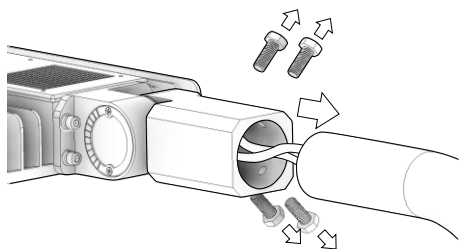
5. Place the two brackets to the desired tilt angle.

6. Fasten the socket head machine screw (from Step 2) to attach the two brackets together.

7. Fasten the cap to the small bracket with the two flat head machine screws that were removed in Step 1.



ADJUST TO THE DESIRED TILT ANGLE



8. Remove the [4] Hex head machine screws from the large AC-ALB-SF bracket.

9. Run the cables from the FALB to the pole in which the Slip-fitter mount will be getting inserted to and follow the Wiring Diagram provided to properly install the light fixture. All wiring must be installed by a certified electrician and must be compliant to NEC standards.

10. Insert the Slipfitter into the pole and fasten the [4] Hex head machine screws that were removed in Step 8.

### WIRING DIAGRAM

The LED Driver input cable consists of 3 conductors: ACL (black), ACN (white), and ground (green). These conductors are to be connected to a Power Supply Cable.

(For Dimmable Fixtures)  
The Dimming cable consists of 2 conductors:  
DIM+ (Blue/ Brown+Gray)  
DIM- (White/ Blue+ Black)

