

**OVERVIEW**

The FHU Series High Bays are high performance LED fixtures ranging from 100- 240 wattage. Available for 100-277V or in 277-480V (for selected models). This product can also be ordered in a White housing finish, and with LED color Temperatures varying from 4000K to 5700K.

APPLICATIONS

This light can be used for indoor or outdoor applications. Typically used for warehouses, garages, gymnasiums or buildings with high ceilings at high mounting heights. This product has multiply mounting methods for varies types of applications.

- Limited Warranty: 5 Years
- E cacy: up to 130 LPW
- Lumen Output: 13,000-29,000 L
- Wattage: 100- 240 W



Project:

Type:

Prepared By:

Date:

Models

Model	Watts(W)	Lumens (LM)	E cacy (LPW)
FHU100	100	13,450	139.31
FHU150	150	19,055	131.87
FHU200	200	24,247	127.54
FHU240	240	27,908	122.62

Lumen Output based on low voltage models at 5000K.
Also available in Color Temperatures of 4000K and 5700K.

Technical Specifications**Warranty**

Paclights warrants these LED products will be free from defects in materials and workmanship for a period of five (5) years from the date of delivery to the end user, including coverage of light output, color stability, driver performance and fixture finish. Please refer to our full warranty.

Qualifications**ETL Listing:**

ETL Listed, conforms to UL STD 1598; Certified to CSA STD C22.2 No.250.0
Suitable for Wet Locations

IESNA LM79 & LM-80 Testing:

Paclights LED luminaires have been tested by an independent laboratory in accordance with IESNA LM-79 and LM-80.

DLC Qualification:

Selected models of this product are on the Design Lights Consortium (DLC) Qualified Products List and are eligible for rebates from DLC Member Utilities. To view our DLC qualified products, please consult the DLC Qualified Products List at www.designlights.org/qpl

Construction**IP Rating:**

Ingress Protection rating of IP65 for dust and water

Ambient Temperature:

Suitable for up to 50° C (122° F) ambient temperature

Cold Weather Starting:

The minimum starting temperature is -40 F°/-40° C

Thermal Management:

Superior thermal management with external Air-Flow fins.

Housing:

Die-cast aluminum housing

Mounting Methods:

- "O" Hook mount. (included)
- Surface mount, 0-90° trunnion. (included)
- Pendant Mount for 3/4" NPS conduit, feed cord through conduit. (optional)
- Slipfitter Mount for 2" Pole or Tenon. (optional)

LED Characteristics**LEDs:**

Long-life, high-e ciency surface mounting LEDs
Color Temp: 4000K, 4500K, 5000K, 5700K
Color Accuracy: >70 CRI

Construction (continue)**Gaskets:**

Silicon Gaskets

Finish:

Our environmentally friendly polyester powder coating are formulated from high-durability and long-lasting color, and contains no VOC or toxic heavy metals.

Lens:

Polycarbonate

Driver Info

Input Voltage: AC100-277V, 50-60 Hz
or AC 277-480V, 50-60 Hz
(on selected models)

Power Factor : >95%

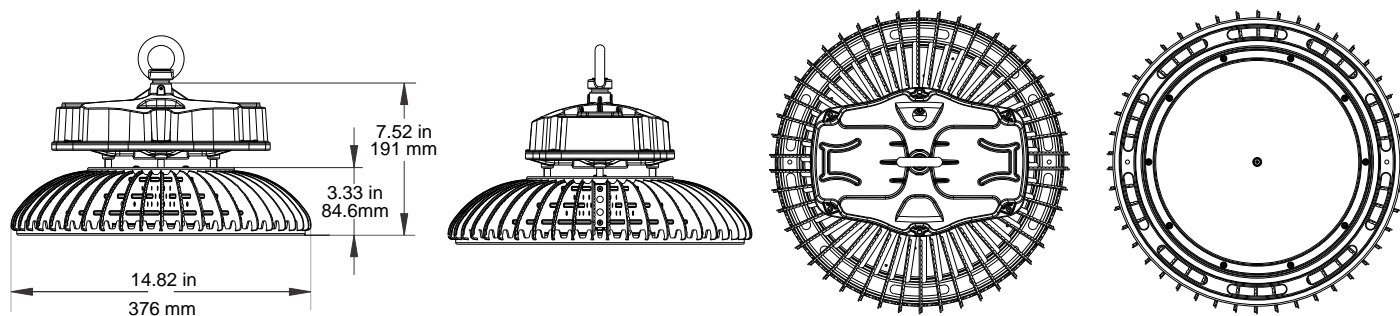
Operating Temperature: -40° F (-40° C)
to 122° F (50° C)

Wattage: 100 W, 150 W, 200 W, 240 W

Ordering Matrix

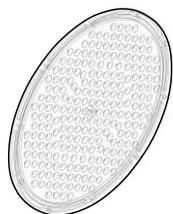
Family	Watts	Voltage	Color Temperature	LED Distribution	Housing Finish Color	Optional Add-ons
FHU	100	LV	50	120	B	CF
	100 = 100W 150 = 150W 200 = 200W 240 = 240W	LV = 100-277v (100/150/200/240w) HV = 277-480v (150/200/240w)	40 = 4000K 45 = 4500K 50 = 5000K 57 = 5700K	60 = 60° - optional (install ACHULEN60A/B) 120 = 120° (INCLUDED)	W = White B = Black	if 2 or more are chosen add "+" in between CF = ACHUCF CM = ACHUCM SF = ACFLSF PS = ACHUPS MO = ACHUMO OS = ACHUOS

Dimensions



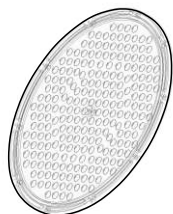
ACHULEN60A - 60° Len for FHU150

ACHULEN60A is a Lens used to replace the default lens for the FHU150 luminaire in order to change the beam angle from 120° to 60°.



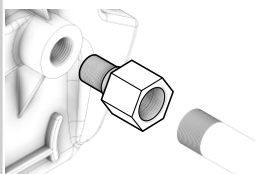
ACHULEN60B - 60° Len for FHU 200

ACHULEN60B is a Lens used to replace the default lens for the FHU200 luminaire in order to change the beam angle from 120° to 60°.



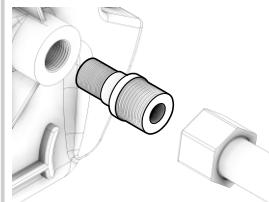
ACHUCF- (Female) Pendant Mount

ACHUCF is a Pendant Mount Adaptor for NPT 3/4" conduit, Female



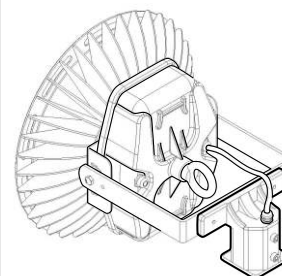
ACHUCM- (Male) Pendant Mount

ACHUCM is a Pendant Mount Adaptor for NPT 3/4" conduit, Male

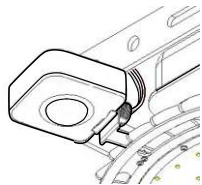


ACFLSF- Slipfitter Mount

The Slipfitter should be mounted onto a hollow round 2" part with AC Power cords running inside of it.



ACHUOS PIR Occupancy Detection (Indoor)

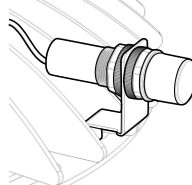


ACHUOS detects changes in the infrared energy given off by occupants as they move within the field-of-view. When occupancy is detected, a self-contained relay switches on the connected lighting load. The sensor is line powered and can switch line voltage. An internal timer, factory set at 15 seconds, keeps the lights on during brief periods of inactivity.

It is ideal for high mounted areas such as warehouses, manufacturing and other high ceiling applications, 15 to 30 ft mounting heights, 15 to 20 ft radial coverage overlaps area lit by a typical high bay fixture at 30 ft.

Time delay is adjustable from 30 seconds to 30 min. Sensor Sensitivity Range is adjustable from 50% to 100%. Adjustable Ambient Light Level can detect whether to turn a fixture on or off by determining if enough light from other sources, such as sunlight, is sufficiently illuminating an area.

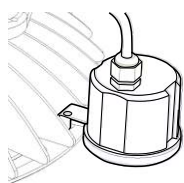
ACHUPS Daylight Harvesting (Indoor)



Faced with the skyrocketing cost of energy and environmental concerns, builders, architects and lighting experts are increasingly turning to daylighting as a primary source of illumination, and proper daylight can increase the comfort. To take full advantage of daylight integration, buildings should have automated controls that either turn on or dim artificial light in response to the available daylight within a space. This is called 'daylight harvesting'.

ACHUPS supplies a simple and effective solution for daylight harvesting. By connecting to 1-10V interface, ACHUPS uses a photocell to measure ambient lux level and automatically calculate how much artificial light is needed, which then converts the amount of light to 1-10V dimmable LED drivers. 1-10V dimmable drivers adjust the lighting output according to the signal from daylight sensor.

ACHUMO Microwave Occupancy Detection



ACHUMO is an innovative and programmable motion detector with HF system 5.8GHz. Motion can be detected through plastic, glass and thin non-metal materials. It can be mounted as high as 48 ft.

The sensor allows energy saving with its signature 3-step dimming function, it is perfect for use in areas that require a light change notice before totally switching off the light. Daylight (on/off) sensor is integrated for maximum energy saving.

ACHUMO+ ACHUPS Microwave Occupancy Detection with Daylight Harvesting



When ACHUMO microwave sensor works together with ACHUPS daylight harvesting sensor, the lighting fixture will dim the light in response to the available daylight in the area, when the area is being occupied.