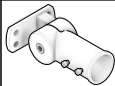


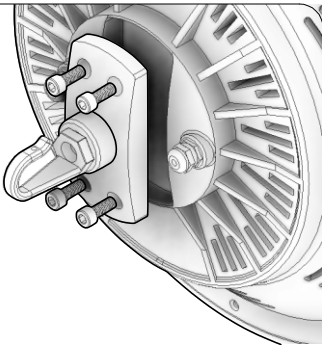
**Includes:** FHW300, FHW400,FHW480

**CAUTION:** PLEASE FOLLOW THIS INSTRUCTION MANUAL CAREFULLY TO PREVENT ANY INJURIES OR COMPLICATIONS THAT MAY ARISE.  
**WARNING:** Before installing or maintaining the luminary, make sure all powers are **TURNED OFF**.  
Verify that supply voltage is correct by comparing it with the label information on all fixtures. Make all connections in accordance with the NEC requirements, and make sure all luminaires are properly secured to prevent any wire complications.

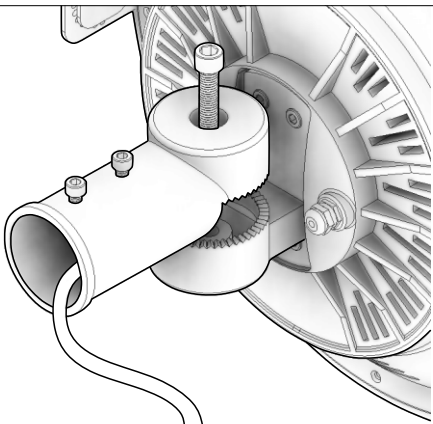
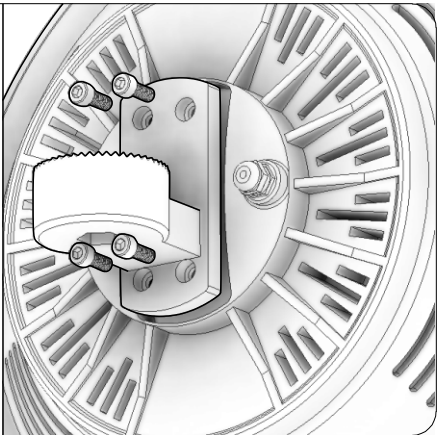
ACHWSF- “ON FIXTURE” SLIPFITTER MOUNT

PART NO.	IMAGE	DESCRIPTION	QTY
ACHWSF		“On Fixture” Slipfitter Mount, Slip-fits over a 2" pole tenon (2.375").	1

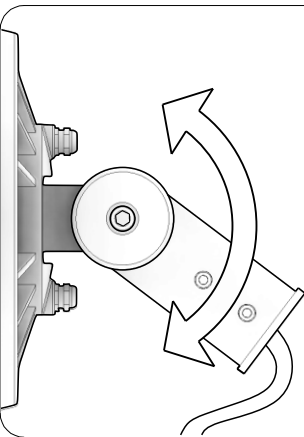
STEP 1: Using an Allen Screw, Remove the [4] Socket head Machine bolts from the back side of the FHW High Bay luminaire.



STEP 2: Fasten the ACHWSF part with the [4] mounting holes using the same socket head machine bolts that were removed in Step 1.



STEP 3: Using the M12 Machine Screw, Run the cables from the FHW, through the ACHWSF Slipfitter.



STEP 4: Before completely tightening the two parts of the slip-fitter together, make sure to orient the angle designed. Once you have adjusted the Slip-fitter to the desired orientation, fasten the M12 bolt.